



MORE SLIM
MORE POWERFUL

2021

YELITECH CAR AUDIO CO., LTD.

Jiangmen Yelitech Car Audio Co., Ltd. is based in Jiangmen, Guangdong, China, at the center of booming Pearl River Delta area. Since established in 1991, we concentrate on the car speaker R&D and manufacturing. As our continually evolving, YELITECH reached new heights in 2007 with the development of Car Amplifier and Head Unit. As it has striven for excellence on the road the past 17 years, YELITECH will work to become a future driving force for the car entertainment field.

We have the good equipment, including 20 production lines for car speaker, car amplifier and head unit, also we import the advanced Japan-based YAMAHA SMT lines. Besides the production lines, we also have the injection moulding machine, and the capability of second process of coating, painting, laser etching and cutting. Our facilities are totaling more than half-million square feet. We have the staff of 800 persons, included R&D team of 50. They are the talent from Japan, Korea and China mainland, with senior experience for 10 years in average. Also we certified ISO9001 in 2001 and QS9000 in 2003. Now we are on the road to TS16949.

With the equipped facilities and strong R&D and QA/QC team, our yearly production capacity is 6 million pieces of speaker, 400 thousand pieces of amplifier and 400 thousand pieces of head unit. Mostly we export to the western, Japan and South-East Asia.

Just-in-time delivery and strict in high quality without compromise, YELITECH is one of the biggest manufacture base of car entertainment. And we are your first-choice business partner. The highest level of management, matched with an energetic workforce of talented individuals in all areas of the company's operations and an innate ability to create truly musical components, has been the power source for the company's remarkable success.

SONDA
U2024
Peak Power: 3000W
RMS Power: 1000W
Freq. Resp.: 28Hz~350Hz
Sensitivity: 85dB/W/m

SONDA
Inspired Driving
SR51 12-44
180W

SR51
5100
SERIES

SONDA
SR51
5100
SERIES



SONDA is registered trademarks of Yelitech Car Audio Co., Ltd. under license by Yelitech Group.

Yelitech Car Audio Co., Ltd.

HK Office:
Rm 1904, 19/F, Boss Commercial Centre
No.28 Ferry Street, Yau Ma Tei, Kowloon, Hong Kong
Tel: +852-27528818 Fax: +852-27528005

Factory:
Tangxi Industrial Zone, Hetang Town,
Pengjiang District, Jiangmen,
Guangdong, China.
Tel: +86-750-3953595 Fax: +86-750-3953500

Website: www.yelitech.com

Copyright © Oct 2018,
All rights reserved.

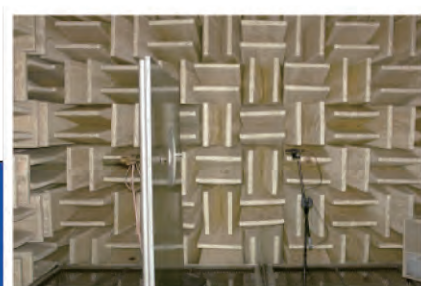
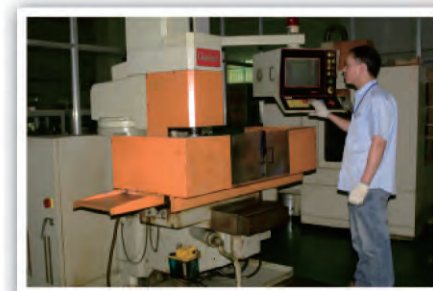
SONDA CAR AUDIO



アメリカ合衆国，日本，スウェーデン，大韓
民国，高度な技術をサポートする，マーケテ
ィングの経験の豊富な，努力を構築する
SONDA カーオーディオシステム。

Amerikas, Japan, Sverige, Sydkorea
avancerad teknik för att stödja, En rik
marknadsföring, Insatser för att bygga
SONDA Bilhögtalare.

USA, Japan, Sweden, Korea advanced
Technical Supporting, wealth of
marketing experience, effort to build the
SONDA car audio and video systems.



2009 SONDA CAR AUDIO SHOW



As the famous show for Electronic products, the HK Electronic Fair is the focus for many domestic and overseas exhibitors, and it is also a stage to show the enchantment for these famous electronic enterprises, including YELITECH. We showed and recommended our best brand SONDA to the consumer, and insist to lead our customer by the latest marketing information and requirements. We do our best to develop many new car audio products and now, we are trying to open the market for car navigator also.



Active Subwoofer Under Seat Installation

On 7th January, 2013, the CES show was held in Las Vegas, America. Yelitech together with his own brand SONDA attended the show also, the special blue booth design looks so attractive and high grade. It showed the image of SONDA brand and deliver the wonderful car audio culture to the visitor. Also, the perspective product information, excellent display make you unforgettable.



ACTIVE SUBWOOFER



● Model: SL2268

● Model: SL2179

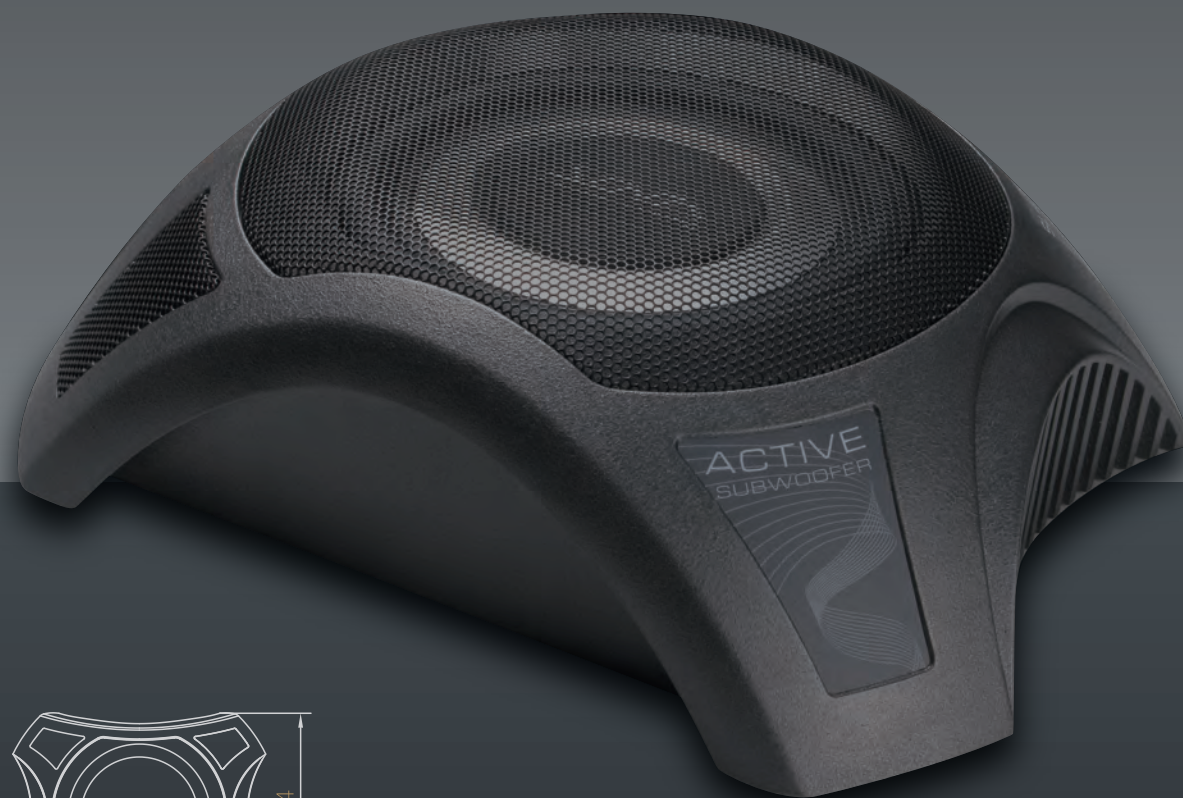
● Model: XL0008-P4

● Model: UL9003

ACTIVE SUBWOOFER



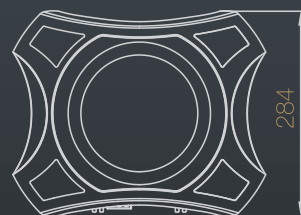
2-Way Input
The 2-way input (speaker and RCA) gives you further installation possibilities. For example, you can easily add the subwoofer to even a factory-installed in-car audio system.



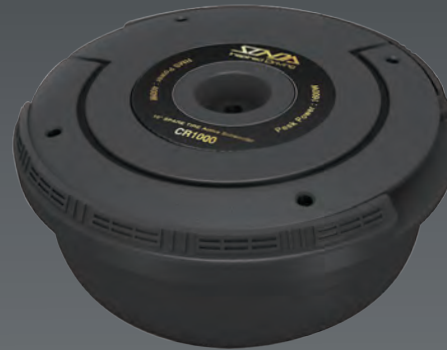
Active Series Sealed Enclosures

360W

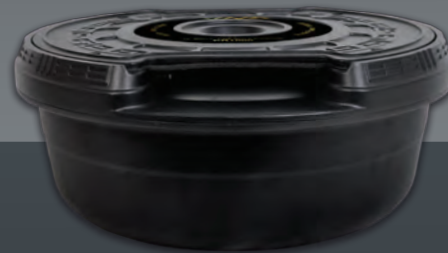
Model Number	SL4200
Size	8"
MAX Power	360W
RMS Power	120W
Frequency Response	45Hz - 120Hz
Impedance	2.3x4 Ω
Signal-to-Noise	98dB
Weight (With Accessories)	5.8Kg
Dimensions(LxWxH):	350 x 284 x 105 mm



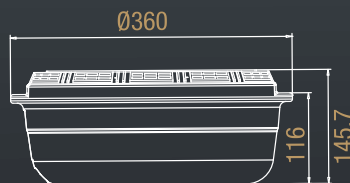
11" SPARE TIRE Active Subwoofer



● Model: CR1100



● Model: CR1000



Performance

CR1000 with 11" diameter subwoofer and 400W D class amplifier. It has low enough frequency for regeneration ability. Lower frequency have stronger diffraction capability, sound will be fatter, which can cover interior space of car. Super D class amplifier improve performance of subwoofer vividly!

CR1000/CR1100 Feature Description

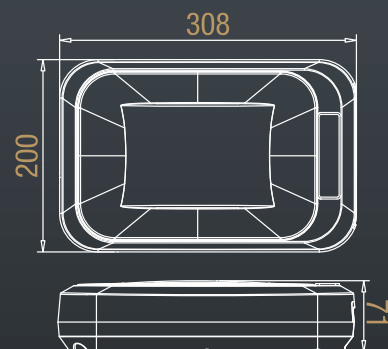
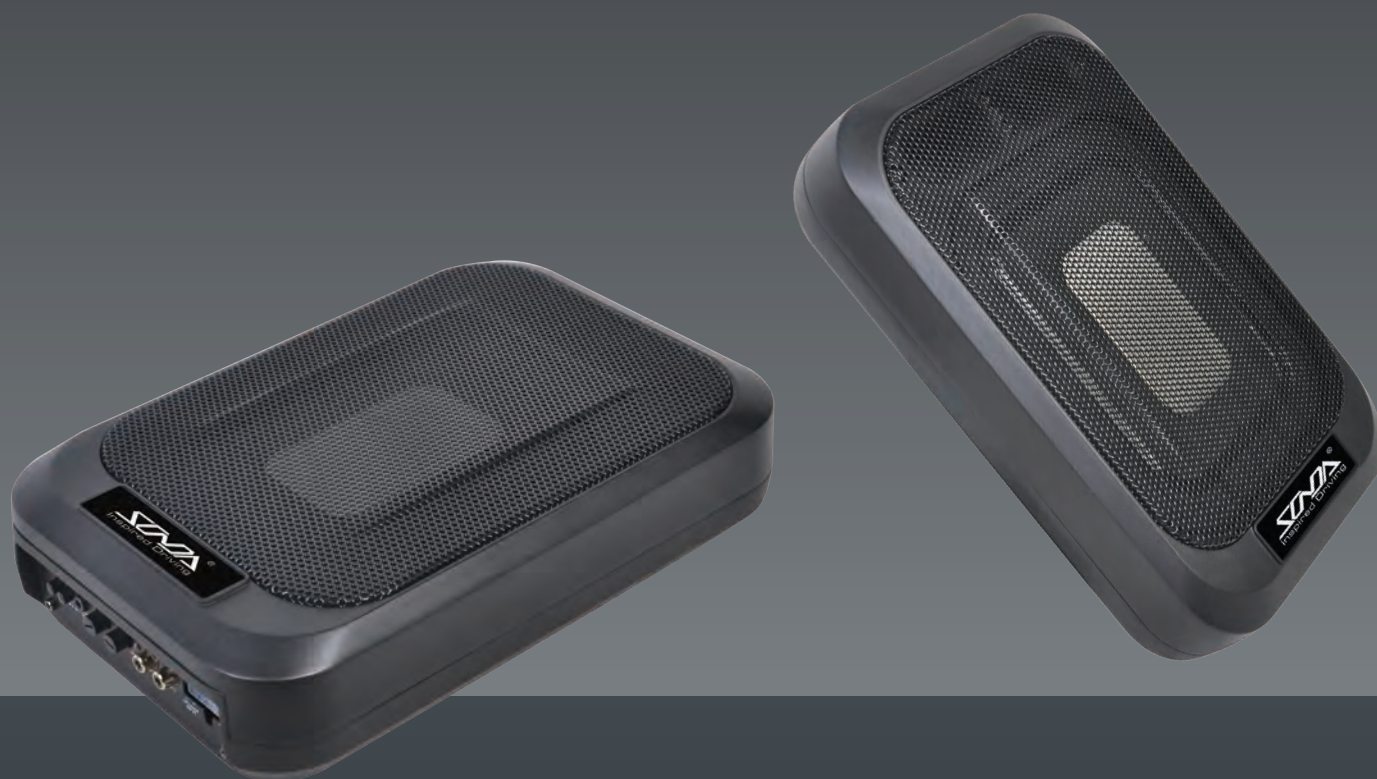
CR1000/CR1100, with 360mm outside diameter, 145mm height, which suitable for 15" tire or more. 380cm² value vibration area. 2 inch copper voice coil with 8 layer, which ensure the affordability of D class amplifier for 400W rate power and 1600W max power. Good performance on heatproof 280 C, acid alkali-resistance and solvent corrosion resistance because of nylon PA66 vibratoin board. Quality ensured even be use in harsh environment! Cambered vibration board design make the LF more width. Double spider design let the LF more stable. Speaker and die-cast aluminium case integrated design eliminate resonance, which cause the sound more pure, heat release directly and improve the affordability fo spaker power!

Active Series Sealed Enclosures

1600W

Model Number	CR1000/CR1100
Size	11"
RMS Power	400W
Peak Power	1600W
Frequency Response	20Hz - 150Hz
Impedance	2 Ω
Dimensions (Φ x H)	ø360x144.5h

7x9" & 4x6" Passive speaker SLIM Active Subwoofer



● Model: SL2179

Active Series

1200W

Model Number	SL2179
Size	7x9"+4x6"
RMS Power	250W
Peak Power	750W
Frequency Response	30Hz - 150Hz
Impedance	2 Ω
Sensitivity (Distortion level 1%)	RCA input 100mV
Dimensions (L x W x H)	308x 200 x 71



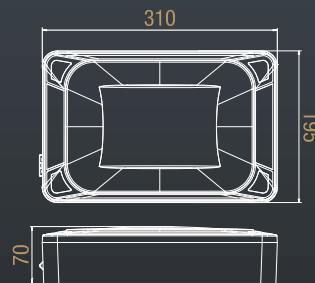
● Model: SL3170



Active Series Sealed Enclosures

320W

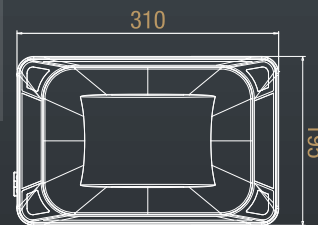
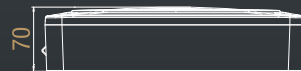
Model Number	SL3170
Size	5x7"+4x6"
RMS Power	80W
Peak Power	240W
Frequency Response	50Hz - 200Hz
Impedance	4 Ω
Sensitivity (Distortion level 1%)	RCA input 100mV
Dimensions (L x W x H)	310 x 195 x 70



4x6" & 5x7" SLIM Active Subwoofer



Model: SL3370



Active Series Sealed Enclosures

320W

Model Number	SL3370
Size	5x7"+4x6"
RMS Power	80W
Peak Power	320W
Frequency Response	50Hz - 200Hz
Impedance	4 Ω
Sensitivity (Distortion level 1%)	RCA input 100mV
Dimensions (L x W x H)	310 x 195 x 70



● Model: SL2268



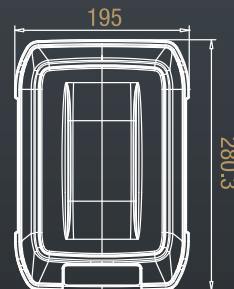
● Model: SL2168



Active Series Sealed Enclosures

330W

Model Number	SL2168	SL2268	SL2368
Size	6x8"	6x8"	6x8"
RMS Power	110W	110W	110W
Peak Power	330W	330W	330W
Frequency Response	30Hz - 160Hz	30Hz - 160Hz	30Hz - 160Hz
Impedance	2 Ω	2 Ω	2 Ω
Sensitivity (Distortion Level 1%)	RCA input 82mV	RCA input 82mV	RCA input 82mV
Dimensions (L x W x H)	279 x 195 x 68	279 x 195 x 68	279 x 195 x 68



● Model: SL2368

9" SLIM Active Subwoofer



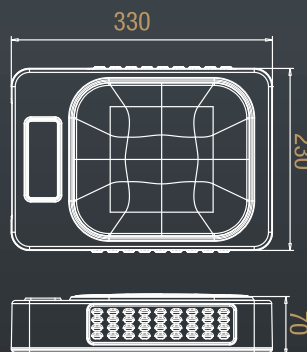
● Model: UL9003-P2

UL9003-P2 Feature Description

UL9003-P2 slim active subwoofer, size 230mm*330mm*70mm, which equivalent to 8" slim active subwoofer in the market. Value vibration area of square active subwoofer is 310cm², near to 10" slim active subwoofer. 8 layers cooper voice coil ensure the affordability of D class amplifier for 250W rate power and 1000W max power. Vibration board of active subwoofer have good performance on heatproof 280 C, acid alkali-resistance and solvent corrosion resistance because of the NYLON PA66 material. Quality assured even use in harsh environment. Ripple edge(patent:) extend the low frequency width. Speaker and die-cast aluminium case integrated design eliminate resonance, which cause the sound more pure, heat release directly and improve the affordability of spaker power. Vibration board of Passive radiator is made by zinc alloy die casting. Heavy enough vibration quality for radiator produce low frequency. Then can overlap with active subwoofer. A spider brake on vibration board of radiator to ensure stability while substantial vibration.



UL9003-P2 have features like bass reflex. Two resonant frequency point, first is 32Hz, second is 74Hz. No product on market with such features.. UL9003-P2 subvert the people cognition of slim active subwoofer in car audio. It's function more like wooden case subwoofer, even better. If you think slim active subwoofer is for accessorial, UL9003-P2 will change your mind! It is a traditional big subwoofer, which have small size and easily put under the seat. And bring you total shocked and super bass enjoyment!



Active Series Sealed Enclosures Performance

1000W

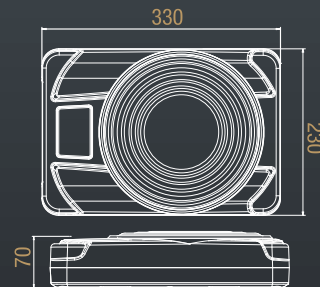
Model Number	UL9003-P2
Size	9x9"
RMS Power	300W
Peak Power	900W
Frequency Response	30Hz - 150Hz
Impedance	2 Ωx4
Sensitivity(Disortion level 1%)	RCA input 100mV
Dimensions (L x W x H)	330 x 230 x 70



● Model: SL2009



● Model: SL1909



Active Series Sealed Enclosures

360W

Model Number	SL1909	SL2009
Size	9"	9"
RMS Power	120W	120W
Peak Power	360W	360W
Frequency Response	30Hz - 160Hz	30Hz - 150Hz
Impedance	2 Ω x4	2 Ω x4
Sensitivity(Disortion level 1%)	RCA input 82mV	RCA input 82mV
Dimensions (L x W x H)	330 x 230 x 77	330 x 230 x 76

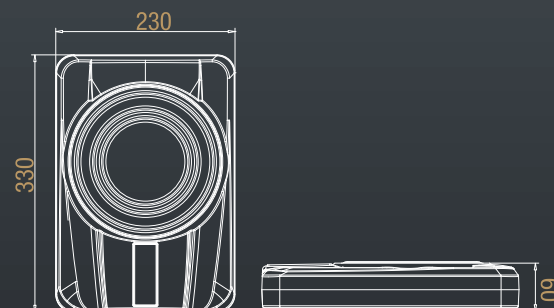
SUPER SLIM Active Subwoofer



Active Series Sealed Enclosures

600W

Model Number	SL0208
Size	8"
RMS Power	200W
Peak Power	600W
Frequency Response	30Hz - 160Hz
Impedance	2 Ω
Sensitivity(Distortion level 1%)	RCA input 100mV
Dimensions (L x W x H)	330 x 230 x 66



5" Way SLIM Active Subwoofer

EXTRA POWER BEYOND YOUR IMAGINATION



5Way

● Model: XL0008-P4

XL008-P4 Super Slim Subwoofer (Patent No.)

XL008-P4 super slim is design for car seat. Size:369.5(L) x 274(W) x76(H). In this narrow and small room, there is a 10inch main super slim speaker on the front (patent no.) and 4pcs 4inch passive speaker on the back side. With accurate phase adjustment, main passive speaker will be LF overlapped when working. Main speaker use flat design, which will be more widely in bass. Voice coil use over 500 °C heatproof material, which coiling 4 layers on the bobbin inwall and outwall with advanced technology. Then match advanced heatsink system, it can bear higher power. Under front bugle flat vibrating board design, the whole only with 35mm height. So. We are able to put speakers on both two sides in this slim case.

Aluminum alloy casting case, more density, stronger, that can mostly avoid the resonance, which cause by vibration when working in big power. And with a good cooling function.

RMS 300W, MAX POWER 900W, Class D amplifier, which provide a huge driving force.

XL008-P4. Excellent design!

The subversion idea of people for subwoofer !

Active Series

750W

8" 5-Way slim

Model Number	XL0008-P4
Size	8"
RMS Power	250W
Peak Power	750W
Frequency Response	30Hz - 160Hz
Impedance	2 Ω
Sensitivity(Disortion level 1%)	RCA input 100mV
Dimensions (L x W x H)	320 x 240 x 78

SUPER SLIM Active Subwoofer



70mm

Only:56mm

● Model: SL1308



Model: XL0010B

● XL0010 More slim more powerful



● Model: XL0008

Active Series Sealed Enclosures

600W

Model Number	XL0010 / XL0010B	XL0008
Size	10"	8"
RMS Power	200W	200W
Peak Power	600W	600W
Frequency Response	30Hz - 160Hz	50Hz - 150Hz
Impedance	1 Ω	1 Ω
Sensitivity(Distortion level 1%)	RCA input 100mV	RCA input 100mV
Dimensions (L x W x H)	369.5 x 274 x 56	320 x 240 x 56



SUPER SLIM Active Subwoofer



Active Series Sealed Enclosures

360W

Model Number	SL1308-1CH / SL1508-1CH	SL1308-2.1CH / SL1508-2.1CH
Size	8"	8"
MAX Power	360W	300W(SUB)+100W×2
RMS Power	120W	120W(SUB)+40×2
Frequency Response	30-160Hz	30-160Hz
Impedance	2Ω	2Ω
Sensitivity(Disortion level 1%)	RCA input 82mV	RCA input 82mV
Dimensions (L x W x H)	340 × 230 × 70	340 × 230 × 70

Active Series Sealed Enclosures

360W

Model Number	SL1310-1CH / SL1510-1CH	SL1310-2.1CH / SL1510-2.1CH
Size	10"	10"
MAX Power	360W	300W(SUB)+100W×2
RMS Power	120W	120W(SUB)+40×2
Frequency Response	30-160Hz	30-160Hz
Impedance	2Ω	2Ω
Sensitivity(Disortion level 1%)	RCA input 82mV	RCA input 82mV
Dimensions (L x W x H)	380 × 280 × 78	380 × 280 × 78

ACTIVE SUBWOOFER



Active Series Sealed Enclosures

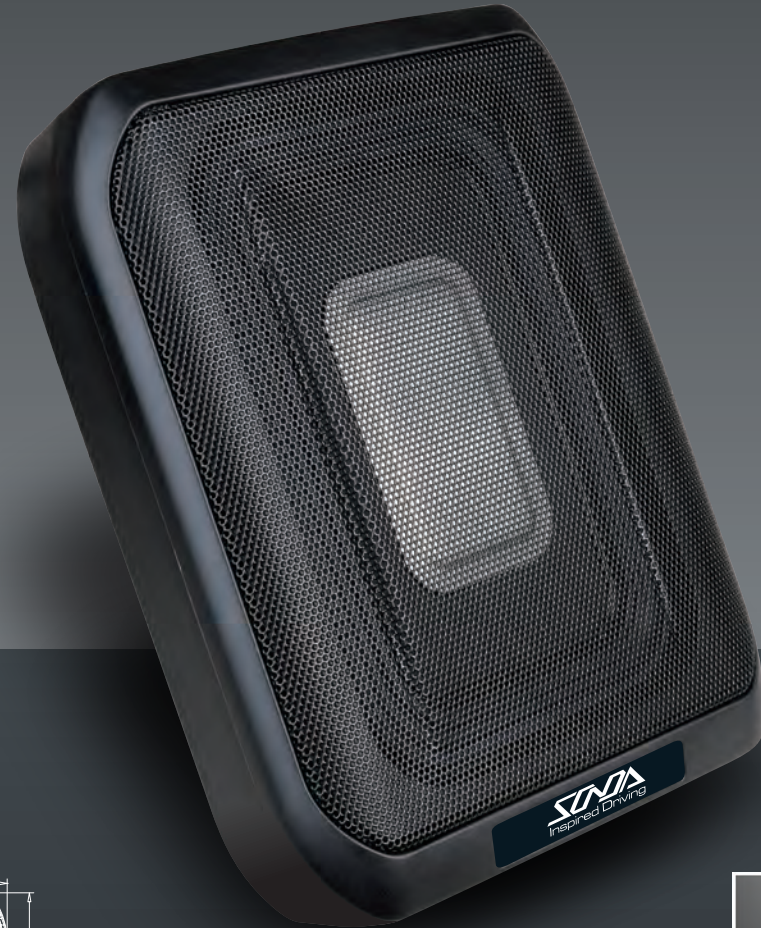
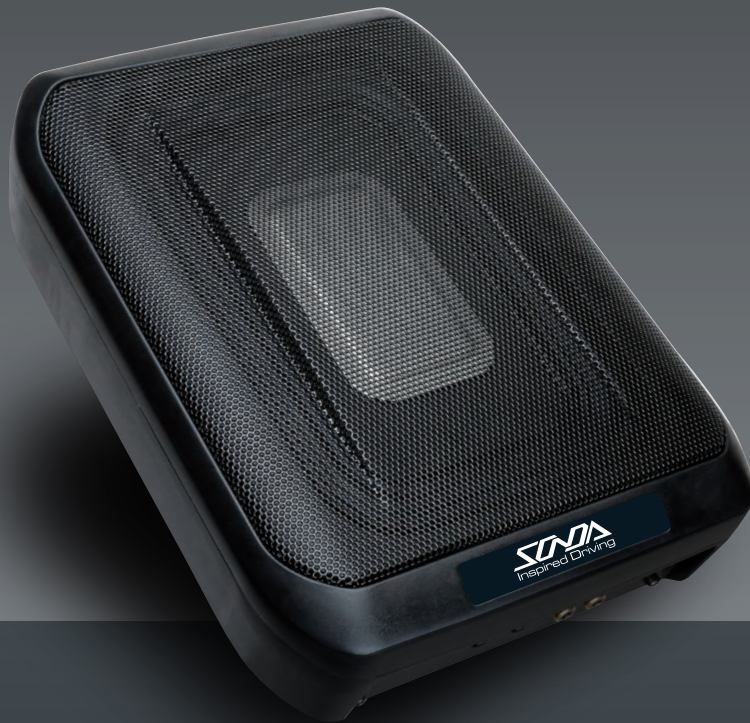
360W

Model Number	SL1608-1CH / SL1808-1CH	SL1608-2.1CH / SL1808-2.1CH
Size	8"	8"
MAX Power	360W	300W(SUB)+100W×2
RMS Power	120W	120W(SUB)+40×2
Frequency Response	30-160Hz	30-160Hz
Impedance	2 Ω	2 Ω
Sensitivity(Disortion level 1%)	RCA input 82mV	RCA input 82mV
Dimensions (L x W x H)	340 × 230 × 70	340 × 230 × 70

Active Series Sealed Enclosures

360W

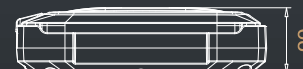
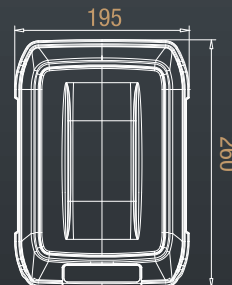
Model Number	SL1610-1CH	SL1610-2.1CH
Size	10"	10"
MAX Power	360W	300W(SUB)+100W×2
RMS Power	120W	120W(SUB)+40×2
Frequency Response	30-160Hz	30-160Hz
Impedance	2 Ω	2 Ω
Sensitivity(Disortion level 1%)	RCA input 82mV	RCA input 82mV
Dimensions (L x W x H)	380 × 280 × 80	380 × 280 × 80



Active Series Sealed Enclosures

330W

Model Number	SL4168
Size	6x8"
RMS Power	110W
Peak Power	330W
Frequency Response	50Hz - 150Hz
Impedance	3 Ω
Sensitivity(Disortion level 1%)	RCA input 82mV
Dimensions (L x W x H)	260 x 195 x 68



● Model: SL4168





SR2200 Series

Subwoofer

Model Number	SR2212	SR2210
Size	12" (31cm)	10" (26cm)
RMS Power	300W	250W
Peak Power	900W	750W
Frequency Response	30Hz - 1000Hz	35Hz - 2000Hz
Sensitivity	88±2 dB/W/m	87±2 dB/W/m
Impedance	4 x 4 Ω	4 x 4 Ω
Voice Coils	2" (50 mm)	2" (50 mm)
Strontium Magnet	60 oz	60 oz

- Black Injection cone with rubber edge

SR3412 Series

Subwoofer

600W

Model Number	SR3412	SR3410
Size	12" (32.5cm)	10" (27.3cm)
RMS Power	350W	300W
Peak Power	1000W	900W
Frequency Response	32Hz - 2000Hz	34Hz - 2300Hz
Sensitivity	90±2 dB/1W/1m	88±2 dB/W/m
Impedance	4 + 4 Ω	4 + 4 Ω
Voice Coils	2" (50 mm)	2" (50 mm)
Strontium Magnet	45 oz x 2	45 oz x 2





SR4300 Series

Subwoofer

Model Number	SR4312	SR4310
Size	12" (31cm)	10" (26cm)
RMS Power	250W	200W
Pesk Power	750W	600W
Frequency Response	28Hz - 800Hz	32Hz - 900Hz
Sensitivity	89±2 dB/W/m	88±2 dB/W/m
Impedance	8/2/4+4 Ω	8/2/4+4 Ω
Voice Coils	2" (50 mm)	2" (50 mm)
Strontium Magnet	50 oz	50 oz

- Black IMPP cone with rubber edge

SR4100 Series

Subwoofer

Model Number	SR4112-44	SR4110-44
Size	12" (31cm)	10" (26cm)
RMS Power	300W	250W
Pesk Power	900W	700W
Frequency Response	30Hz - 600Hz	32Hz - 900Hz
Sensitivity	88±2 dB/W/m	86±2 dB/W/m
Impedance	2 x 4 Ω	2 x 4 Ω
Voice Coils	2" (50 mm)	2" (50 mm)
Strontium Magnet	32 oz x 2pc	32 oz x 2pc

- Black Mica PP Cone
- Rubber Surrounds



SR4112-44 / 12" (31cm)
Subwoofer 4 Ω Dual Voice Coil Type

Subwoofer



SR5212-44 / 12" (31cm)

Subwoofer 4 Ω Dual Voice Coil Type



SR5200 Series

Subwoofer

Model Number	SR5212-44	SF5210-44
Size	12" (32cm)	10" (26cm)
RMS Power	500W	400W
Peak Power	1500W	1200W
Frequency Response	32Hz - 500Hz	34Hz - 500Hz
Sensitivity	88±2 dB/W/m	87±2 dB/W/m
Impedance	8/2/4+4 Ω	8/2/4+4 Ω
Voice Coils	2" (50 mm)	2" (50 mm)
Strontium Magnet	90 oz	80 oz

- Black Non-press cone with santoprene edge

SR5312 / 12" (31cm)

Subwoofer 4 Ω Dual Voice Coil Type

SR5300 Series

Subwoofer

Model Number	SR5312	SR5310
Size	12" (32cm)	10" (26cm)
RMS Power	350W	300W
Peak Power	1050W	900W
Frequency Response	28Hz - 500Hz	30Hz - 500Hz
Sensitivity	88±2 dB/W/m	87±2 dB/W/m
Impedance	2 x 4 Ω	2 x 4 Ω
Voice Coils	2" (50 mm)	2" (50 mm)
Strontium Magnet	90 oz	80 oz

- Black IMPP cone with rubber surround edge





Voice Coil
4-layer long
voice coils

Magnet cover
Aluminium

Dust cap
Aluminium

U2024 / 12x14" (28x35cm)

Subwoofer 4 Ω Dual Voice Coil Type

U Series

Subwoofer U-type

Model Number	U2024	U2069
Size	12x14" (28x35cm)	6x9" (12x17cm)
RMS Power	500W	100W
Pesk Power	1500W	300W
Frequency Response	28Hz - 350Hz	50Hz - 1500Hz
Sensitivity	86±2 dB/W/m	84±2 dB/W/m
Impedance	2 x 4 Ω	2 x 4 Ω
Voice Coils	2.4" (60 mm)	1.4" (35 mm)
Strontium Magnet	120 oz	25 oz

SR6000 Series

Subwoofer

Model Number	SR6012-44	SR6010-44
Size	12" (32cm)	10" (26cm)
RMS Power	400W	300W
Pesk Power	1200W	900W
Frequency Response	28Hz - 350Hz	30Hz - 350Hz
Sensitivity	86±2 dB/W/m	85±2 dB/W/m
Impedance	2 x 4 Ω	2 x 4 Ω
Voice Coils	2.4" (60 mm)	2" (50mm)
Strontium Magnet	100 oz	90 oz

Sorround
Santoprene

Cone
Polypropylene with
Carbon composite
injection



SR6012 / 12" (31cm)

Subwoofer 4 Ω Dual Voice Coil Type

ULTIMATE TECHNOLOGY



Spider
Conex+Polyester+Cotton

Basket
Aluminium

Surround
Foam

Cone
High quality paper

Voice Coil
4-Layer Aluminium Wire coils

SR8000 Series Subwoofer

6000W

Model Number	SR8012A
Size	13" (35.5cm)
RMS Power	3000W
Peak Power	6000W
Frequency Response	30Hz - 800Hz
Sensitivity	87±2 dB/W/m
Impedance	4/1/2+2 Ω
Voice Coils	3.5" (90.5 mm)
Strontium Magnet	234 oz (78 oz x 3pc)

SR8012A / 13" (35.5cm)
Subwoofer 4 Ω Dual Voice Coil Type

SR8000 Series Subwoofer

4000W

Model Number	SR8012B-44
Size	13" (35.5cm)
RMS Power	2000W
Peak Power	4000W
Frequency Response	30Hz - 600Hz
Sensitivity	87±2 dB/W/m
Impedance	4/1/2+2 Ω
Voice Coils	3" (76.2 mm)
Strontium Magnet	234 oz (78 oz x 3pc)

- Paper with Kevlar cone with foam surround edge
- Rubber Surrounds



Spider
Conex+Polyester+Cotton

Basket
Aluminium

SR8012B-44 / 13" (35.5cm)
Subwoofer 4 Ω Dual Voice Coil Type

Surround
Foam

Cone
High quality paper

Voice Coil
4-Layer Aluminium Wire coils



H 95mm



L3100 Series
Subwoofer

600W

Model Number	L3112	L3110
Size	12" (32cm)	10" (27cm)
RMS Power	300W	200W
Pesk Power	900W	600W
Frequency Response	28Hz - 2800Hz	32Hz - 3000Hz
Sensitivity	86±2 dB/W/m	86±2 dB/W/m
Impedance	2 x 4 Ω	2 x 4 Ω
Voice Coils	2" (50.5 mm)	1.75" (44.5 mm)
Strontium Magnet	50 oz	45 oz

- PP Cone with rubber edge

L2500 Series (SLIM)

Subwoofer

Model Number	L2512	L2510
Size	12" (31cm)	10" (26cm)
RMS Power	300W	200W
Pesk Power	600W	400W
Frequency Response	30Hz - 300Hz	35Hz - 350Hz
Sensitivity	88±2 dB/W/m	87±2 dB/W/m
Impedance	4 Ω / 4 + 4 Ω	4 Ω / 4 + 4 Ω
Voice Coils	1.75" (44.5 mm)	1.5" (38 mm)
Strontium Magnet	52.2 oz	41.2 oz

- Composite IMPP Cone
- Rubber Surrounds



Competition level



Cone
Linen + Paper high Quality

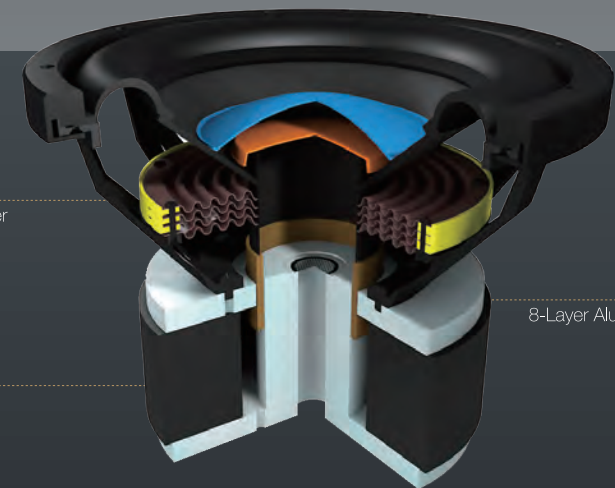
Sorround
Santoprene

Strontrum Maget:
220 x 110 x 25 x 3PCS

AK Series Subwoofer

10000W

Model Number	AK12S5
Size	12" (32cm)
RMS Power	5000W
Peak Power	10000W
Frequency Response	40Hz - 700Hz
Sensitivity	89±2 dB/W/m
Impedance	4/1/2+2 Ω
Voice Coils	3.2" (78 mm)
Strontium Magnet	377 oz



Spider
4PCS Cone + Polyester

Voils
8-Layer Aluminium Wire Voils

AK12S5 / 12" (32cm)
Subwoofer 4 Ω Dual Voice Coil Type

Competition
level

PK12X3 / 12" (32cm)
Subwoofer 4 Ω Dual Voice Coil Type



Voice Coils
4-layer Aluminium Wire coils

Spider
Conex+Polyester+Cotton

Cone
High quality paper

Sorround
Foam

Basket
Aluminium

PK Series Subwoofer

6000W

Model Number	PK12X3
Size	12" (32cm)
RMS Power	3000W
Peak Power	6000W
Frequency Response	40Hz - 700Hz
Sensitivity	89±2 dB/W/m
Impedance	4/1/2+2 Ω
Voice Coils	2.4" (60.6 mm)
Strontium Magnet	281 oz

Coaxial Speaker

CX1700 Series Coaxial Speaker

Model Number	2-Way			4-Way
	CX1740	CX1755	CX1760	CX1769
Size	4" (10cm)	5.25" (13cm)	6" (16cm)	6x9" (16x24cm)
RMS Power	20W	25W	30W	35W
Peak Power	60W	75W	90W	105W
Frequency Response	80Hz - 22kHz	70Hz - 22kHz	65Hz - 22kHz	55Hz - 22kHz
Sensitivity	86 dB/W/m	87 dB/W/m	88 dB/W/m	90 dB/W/m
Impedance	4 Ω	4 Ω	4 Ω	4 Ω
Voice Coils	0.75"	0.75"	1"	1.25"
Strontium Magnet	5.4 oz	5.4 oz	8 oz	20 oz



- Grey injection PP cone with rubber edge
- 28mm Mylar balanced dome tweeter



CX1740

CX1755

CX1760

CX1769

CX2300 Series

Coaxial Speaker

2-Way

Model Number	CX2340	CX2355	CX2365	CX2369
Size	4" (10cm)	5.25" (13cm)	6.5" (16.5cm)	6x9" (16x24cm)
RMS Power	25W	30W	60W	80W
Peak Power	100W	120W	240W	240W
Frequency Response	110Hz - 22kHz	80Hz - 22kHz	70Hz - 22kHz	55Hz - 22kHz
Sensitivity	85 dB/W/m	86 dB/W/m	90 dB/W/m	92 dB/W/m
Impedance	4 Ω	4 Ω	4 Ω	4 Ω
Voice Coils	1"	1"	1.3"	1.3"
Strontium Magnet	8 oz	8 oz	13.5 oz	20 oz



CX2369



CX2365



CX2355



CX2340

- Black paper with mica foam cone with rubber
- Rubber surrounds
- PEI dome tweeter

Coaxial Speaker



- Black glass fiber cone with rubber edge
- PEI dome tweeter



CX4340

CX4355

CX4300 Series

Coaxial Speaker

Model Number	2-Way			
	CX4340	CX4355	CX4365	CX4369
Size	4" (10cm)	5.25" (13cm)	6.5" (16.5cm)	6x9" (16x24cm)
RMS Power	25W	30W	60W	80W
Peak Power	75W	90W	180W	240W
Frequency Response	110Hz - 22kHz	95Hz - 22kHz	80Hz - 22kHz	55Hz - 22kHz
Sensitivity	85 dB/W/m	86 dB/W/m	88 dB/W/m	90 dB/W/m
Impedance	4 Ω	4 Ω	4 Ω	4 Ω
Voice Coils	1"	1"	1.3"	1.3"
Strontium Magnet	9 oz	9 oz	13.5 oz	20 oz



CX4365



CX4369

TX107 Series

Component Set

Model Number	TX107
Size	6.5" (16.5cm)
RMS Power	40W
Peak Power	120W
Frequency Response	90Hz - 22kHz
Sensitivity	88 dB/W/m
Impedance	4 Ω
ASV Voice Coils	1"(25mm)
Strontium Magnet	11.17 OZ

TX107 / 6.5" (16.5cm)

Gray-black and silver sandy paper cone with rubber edge

- 29mm silk dome tweeter



TX2200 Series

Component Set

90W

Model Number	TX2265
Size	6.5" (16.5cm)
RMS Power	30W
Peak Power	90W
Frequency Response	60Hz - 22kHz
Sensitivity	88 dB/W/m
Impedance	4 Ω
Voice Coils	1"
Strontium Magnet	9 oz

- Blue IMPP Cone With Rubber Edge
- Crossover Network Unit: 3.5KHz, 12dB/oct
- 38mm PEI balanced dome tweeter

TX2265 / 6.5" (16.5cm)

Packaged Component Speaker System

Component Set



TX318 Series Component Set

300W

Model Number	TX318
Size	6.5" (16.5cm)
RMS Power	100W
Peak Power	300W
Frequency Response	60Hz - 25kHz
Sensitivity	89 dB/W/m
Impedance	4 Ω
Voice Coils	1.4"
Strontium Magnet	16 oz

TX318 / 6.5" (16.5cm)
6.5inch 3 way component set



TZ603 Series Component Set

135W

Model Number	TZ603
Size	6.5" (16.5cm)
RMS Power	45W
Peak Power	135W
Frequency Response	90Hz - 22kHz
Sensitivity	91 dB/W/m
Impedance	4 Ω
Voice Coils	1.2"
Strontium Magnet	20 oz

- paper cone with rubber edge
- Φ25mm AL-mg mixed horn tweeter

TX110 Series

Component Set

150W

Model Number	TX110
Size	6.5" (16.5cm)
RMS Power	50W
Peak Power	150W
Frequency Response	58Hz - 20kHz
Sensitivity	88 dB/W/m
Impedance	4 Ω
Voice Coils	1.2"
Strontium Magnet	15 oz

- Black pp cone with rubber edge
- Φ38mm silk dome tweeter



TZ657G Series

Component Set

180W

Model Number	TZ657G
Size	6.5" (16.5cm)
RMS Power	60W
Peak Power	180W
Frequency Response	68Hz - 20kHz
Sensitivity	90 dB/W/m
Impedance	4 Ω
Voice Coils	1"
Strontium Magnet	15 oz

- Bulletproof fiber cone with rubber edge
- Φ25mm silk dome tweeter



Component Set



TX4300 Series Component Set

240W

Model Number	TX4565
Size	6.5" (16.5cm)
RMS Power	80W
Peak Power	240W
Frequency Response	80Hz - 22kHz
Sensitivity	88 dB/W/m
Impedance	4 Ω
Voice Coils	1.3" (32.88mm)
Strontium Magnet	13 oz



TX4565 / 6.5" (16.5cm) Packaged Component Speaker System

- Black glass fiber cone with rubber edge
- Crossover Network Unit: 3.5kHz, 12dB/oct
- 38mm silk dome tweeter



TX6100 Series Component Set

160W

Model Number	TX6165
Size	6.5" (16.5cm)
RMS Power	40W
Peak Power	160W
Frequency Response	70Hz - 22kHz
Sensitivity	87 dB/W/m
Impedance	4 Ω
ASV Voice Coils	1"
Strontium Magnet	10.3 oz

TX6165 / 6.5" (16.5cm) Packaged Component Speaker System



TX103 / 6.5" (16.5cm)

Packaged Component Speaker System

- Grey black mica PP cone with rubber edge
- Crossover Network Unit: 3.15kHz, 6dB/oct
- 38mm Slik dome tweeter

TX103 Series
Component Set

120W

Model Number	TX103
Size	6.5" (16.5cm)
RMS Power	40W
Peak Power	120W
Frequency Response	75Hz - 25kHz
Sensitivity	90 dB/W/m
Impedance	4 Ω
Voice Coils	1"
Strontium Magnet	10 oz

TX101 Series
Component Set

120W

Model Number	TX101
Size	6.5" (16.5cm)
RMS Power	40W
Peak Power	120W
Frequency Response	75Hz - 25kHz
Sensitivity	90 dB/W/m
Impedance	4 Ω
Voice Coils	1"
Strontium Magnet	10 oz

TX101 / 6.5" (16.5cm)

Packaged Component Speaker System

- Black pp with mica cone with rubber dege
- Crossover Network Unit: 3.15kHz, 6dB/oct
- 38mm Slik dome tweeter



Coaxial Speaker



TX105 / 6.5" (16.5cm)

Packaged Component Speaker System

- 6.5inch black mica PP cone with Rubber surround edge
- Crossover Network Unit: 7KHz, 3dB/oct
- 38mm Slik dome tweeter

TX105 Series

Component Set

120W

Model Number	TX105
Size	6.5" (16.5cm)
RMS Power	40W
Peak Power	120W
Frequency Response	60Hz - 25kHz
Sensitivity	88 dB/W/m
Impedance	4 Ω
Voice Coils	1"
Strontium Magnet	12 oz

TX201 Series

Component Set

120W

Model Number	TX201
Size	6.5" (16.5cm)
RMS Power	40W
Peak Power	120W
Frequency Response	75Hz - 25kHz
Sensitivity	90 dB/W/m
Impedance	4 Ω
Voice Coils	1"
Strontium Magnet	15 oz

TX201 / 6.5" (16.5cm)

Packaged Component Speaker System

- Black pulp with wool nonpriss cone with rubber dege
- Crossover Network Unit: 3.15kHz,6dB/oct
- 38mm Slik dome tweeter





TX203 / 6.5" (16.5cm)
Packaged Component Speaker System

- Black aluminum cone with rubber edge
- Crossover network unit: 3khz,12db/oct
- 38mm silk soft dome tweeter

TX203 Series
Component Set

150W

Model Number	TX203
Size	6.5" (16.5cm)
RMS Power	50W
Peak Power	150W
Frequency Response	65Hz - 25kHz
Sensitivity	88 dB/W/m
Impedance	4 Ω
Voice Coils	1"
Strontium Magnet	15 oz

TX202 Series
Component Set

180W

Model Number	TX202
Size	6.5" (16.5cm)
RMS Power	60W
Peak Power	180W
Frequency Response	75Hz - 25kHz
Sensitivity	90 dB/W/m
Impedance	4 Ω
Voice Coils	1"
Strontium Magnet	15 oz

TX202 / 6.5" (16.5cm)
Packaged Component Speaker System

- carbon fiber injection cone with santoprene
- Crossover Network Unit: 3,15kHz,6dB/oct
- 38mm Silk dome tweeter



Component Set



TX206 / 6.5" (16.5cm)

Packaged Component Speaker System



TX206 Series

Component Set

240W

Model Number	TX206
Size	6.5" (16.5cm)
RMS Power	60W
Peak Power	240W
Frequency Response	65Hz - 25kHz
Sensitivity	88 dB/W/m
Impedance	4 Ω
Voice Coils	1.2"
Strontium Magnet	15 oz

- Black color kevlar fiber
- Rubber surround edge
- Crossover Network Unit: 2.5kHz, 12dB/oct

TX209

Component Set

300W

TX209/ 6.5" (16.5cm)

2-way Component System

Model Number	TX209
Size	6.5" (16.5cm)
RMS Power	100W
Peak Power	300W
Frequency Response	60Hz - 25kHz
Sensitivity	89 dB/W/m
Impedance	4 Ω
Voice Coils	1.4"
Strontium Magnet	17 oz

- Titanium color kevlar fiber cone rubber edge
- Rubber surround edge
- Crossover network unit: 2.5kHz, 4.0kHz, 12dB/oct
- 38mm silk dome tweeter
- 77mm kevlar fiber cone midrange
- Neodymium magnet: ø24.5×4.0t N45H



TX9265 / 6.5" (16.5cm)
Packaged Component Speaker System



TX9265
Component Set

320W

Model Number	TX9265
Size	6.5" (16.5cm)
RMS Power	80W
Peak Power	320W
Frequency Response	65Hz - 30kHz
Sensitivity	88 dB/W/m
Impedance	4 Ω
Voice Coils	1.4"
Strontium Magnet	17 oz

- Black German modified pp weave cone
- Rubber surround edge
- 38mm Peek dome tweeter
- Crossover network unit: 3.5KHz 4.0KHz, 12dB/oct

TX304 Series
3-way Component Set

320W

Model Number	TX9265
Size	6.5" (16.5cm)
RMS Power	80W
Peak Power	320W
Frequency Response	65Hz - 30kHz
Sensitivity	88 dB/W/m
Impedance	4 Ω
Voice Coils	1.4"
Strontium Magnet	17 oz

- Black PP with carbon cone
- Rubber surround edge
- Crossover Network Unit: 1.2kHz 2.5kHz, 12dB/oct
- 31mm Silk dome tweeter
- 78mm PC dome midrange



Component Set



TX302A

3-way Component Set

300W

Model Number	TX302A
Size	6.5" (16cm)
RMS Power	100W
Peak Power	300W
Frequency Response	60Hz - 25kHz
Sensitivity	89 dB/W/m
Impedance	4 Ω
Voice Coils	1.4"
Strontium Magnet	17 oz

TX302A / 6.5" (16.5cm)
3-way Component System

TX303

3way Component Set

300W

Model Number	TX303
Size	6.5" (16.5cm)
RMS Power	100W
Peak Power	300W
Frequency Response	60Hz - 25kHz
Sensitivity	88 dB/W/m
Impedance	4 Ω
Voice Coils	1"
Strontium Magnet	15 oz



TX303 / 6.5" (16.5cm)
3-way Component System



TX306

3-way Component Set

180W

Model Number	TX306
Size	6.5" (16.5cm)
RMS Power	60W
Peak Power	180W
Frequency Response	60Hz - 25kHz
Sensitivity	89 dB/W/m
Impedance	4 Ω
Voice Coils	1.4"
Strontium Magnet	17 oz

TX306 / 6.5" (16.5cm)
3-way Component System

TX307

3-way Component Set

300W

Model Number	TX307
Size	6.5" (16.5cm)
RMS Power	100W
Peak Power	300W
Frequency Response	50Hz - 25kHz
Sensitivity	90 dB/W/m
Impedance	4 Ω
Voice Coils	1.4"
Strontium Magnet	Neodymium magnet

TX307 / 6.5" (16.5cm)
3-way Component System



COAXIAL SPEAKER



CX4540 25 W RMS. 75 W MAX.

4" (10 cm) 2-Way Coaxial Speaker

- Frequency Response: 110 Hz - 22kHz
- Sensitivity: 85 dB/W/m
- Impedance: 4Ω
- Magnet: 9.0 Oz
- Vice coil: 25mm
- Tweeter: Ø13.5mm PEI dome cone tweeter

Common Features

- Black glass fiber cone with rubber edge

CX4555 30 W RMS. 90 W MAX.

5.25" (13 cm) 2-Way Coaxial Speaker

- Frequency Response: 75 Hz - 32 kHz
- Sensitivity: 86 dB/W/m
- Impedance: 4Ω
- Magnet: 9.0 Oz
- Vice coil: 25mm
- Tweeter: Ø13.5mm PEI dome cone tweeter

CX4565 35 W RMS. 105 W MAX.

6.5" (17 cm) 2-Way Coaxial Speaker

- Frequency Response: 80 Hz - 22 kHz
- Sensitivity: 88 dB/W/m
- Impedance: 4Ω
- Magnet: 13 Oz
- Vice coil: 32.5mm
- Tweeter: Ø29mm PEI dome cone tweeter

CX4569 40 W RMS. 120 W MAX.

6x9" (16 x 24 cm) 3-Way Coaxial Speaker

- Frequency Response: 55 Hz - 22 kHz
- Sensitivity: 90 dB/W/m
- Impedance: 4Ω
- Magnet: 20 Oz
- Vice coil: 32.5mm
- Tweeter: Ø29mm PEI dome cone tweeter



YL-F4140 20 W RMS. 90 W MAX.

4" (10 cm) 3-Way Coaxial Speaker

- Frequency Response: 105 Hz - 20 kHz
- Sensitivity: 84 dB/W/m
- Impedance: 4Ω
- Magnet: 5.4 Oz
- Vice coil: 25mm
- Tweeter: Ø29mm mylar dome tweeter

Common Features

- Black color paper cone with rubber edge

YL-F4155 25 W RMS. 110 W MAX.

5.25" (13 cm) 3-Way Coaxial Speaker

- Frequency Response: 95 Hz - 20 kHz
- Sensitivity: 85 dB/W/m
- Impedance: 4Ω
- Magnet: 6.5 Oz
- Vice coil: 25mm
- Tweeter: Ø29mm mylar dome tweeter

YL-F4165 30 W RMS. 120 W MAX.

6.5" (17 cm) 3-Way Coaxial Speaker

- Frequency Response: 75 Hz - 20 kHz
- Sensitivity: 87 dB/W/m
- Impedance: 4Ω
- Magnet: 10 Oz
- Vice coil: 25mm
- Tweeter: Ø36mm mylar dome tweeter

YL-F4169 35 W RMS. 150 W MAX.

6x9" (16 x 24 cm) 3-Way Coaxial Speaker

- Frequency Response: 65 Hz - 20 kHz
- Sensitivity: 88 dB/W/m
- Impedance: 4Ω
- Magnet: 20 Oz
- Vice coil: 30mm
- Tweeter: Ø36mm mylar dome tweeter



YL-F2640 20 W RMS. 75 W MAX.

4" (10 cm) 2-Way Coaxial Speaker

- Frequency Response: 105 Hz - 20 kHz
- Sensitivity: 85 dB/W/m
- Impedance: 4Ω
- Magnet: 5.4 Oz
- Vice coil: 25mm
- Tweeter: Ø28mm balanced dome cone tweeter

Common Features

- Black infection cone with rubber edge



YL-F2655 25 W RMS. 90 W MAX.

5.25" (13 cm) 2-Way Coaxial Speaker

- Frequency Response: 105 Hz - 20 kHz
- Sensitivity: 85 dB/W/m
- Impedance: 4Ω
- Magnet: 6.5 Oz
- Vice coil: 25mm
- Tweeter: Ø28mm balanced dome cone tweeter



YL-F2665 30 W RMS. 120 W MAX.

6.5" (17 cm) 4-Way Coaxial Speaker

- Frequency Response: 95 Hz - 20 kHz
- Sensitivity: 86 dB/W/m
- Impedance: 4Ω
- Magnet: 10 Oz
- Vice coil: 25mm
- Tweeter: Ø28mm balanced dome cone tweeter



YL-F2669 40 W RMS. 120 W MAX.

6x9" (16 x 24 cm) 4-Way Coaxial Speaker

- Frequency Response: 65 Hz - 22 kHz
- Sensitivity: 89 dB/W/m
- Impedance: 4Ω
- Magnet: 20 Oz
- Vice coil: 25mm
- Tweeter: Ø58mm mylar cone midrange
Ø28mm balanced dome cone tweeter



YL-F1540B 20 W RMS. 90 W MAX.

4" (10 cm) 2-Way Coaxial Speaker

- Frequency Response: 110 Hz - 20 kHz
- Sensitivity: 85 dB/W/m
- Impedance: 4Ω
- Magnet: 5.4 Oz
- Vice coil: 25mm
- Tweeter: Ø28mm mylar half dome tweeter

Common Features

- Black color paper cone with rubber edge



YL-F1550B 25 W RMS. 110 W MAX.

5.25" (13 cm) 2-Way Coaxial Speaker

- Frequency Response: 95 Hz - 20 kHz
- Sensitivity: 86 dB/W/m
- Impedance: 4Ω
- Magnet: 6.5 Oz
- Vice coil: 25mm
- Tweeter: Ø28mm mylar half dome tweeter



YL-F1565B 30 W RMS. 130 W MAX.

6.5" (17 cm) 3-Way Coaxial Speaker

- Frequency Response: 75 Hz - 20 kHz
- Sensitivity: 87 dB/W/m
- Impedance: 4Ω
- Magnet: 8 Oz
- Vice coil: 25mm
- Tweeter: Ø28mm mylar half dome tweeter



YL-F1569B 35 W RMS. 150 W MAX.

6x9" (16 x 24 cm) 4-Way Coaxial Speaker

- Frequency Response: 65 Hz - 20 kHz
- Sensitivity: 88 dB/W/m
- Impedance: 4Ω
- Magnet: 20 Oz
- Vice coil: 25mm
- Tweeter: Ø58mm mylar cone tweeter

COAXIAL SPEAKER



YL-F2740 25 W RMS. 75 W MAX.

4" (10 cm) 2-Way Coaxial Speaker

- Frequency Response: 105 Hz - 20 kHz
- Sensitivity: 84 dB/W/m
- Impedance: 4Ω
- Magnet: 5.4 Oz
- Vice coil: 25mm
- Tweeter: Φ28mm mylar half dome tweeter



YL-F2755 30 W RMS. 90 W MAX.

5.25" (13 cm) 2-Way Coaxial Speaker

- Frequency Response: 95 Hz - 20 kHz
- Sensitivity: 85 dB/W/m
- Impedance: 4Ω
- Magnet: 6.5 Oz
- Vice coil: 25mm
- Tweeter: Φ28mm mylar half dome tweeter



YL-F2765 35 W RMS. 140 W MAX.

6.5" (17 cm) 2-Way Coaxial Speaker

- Frequency Response: 75 Hz - 20 kHz
- Sensitivity: 87 dB/W/m
- Impedance: 4Ω
- Magnet: 10 Oz
- Vice coil: 25mm
- Tweeter: Φ28mm mylar half dome tweeter



YL-F2769 40 W RMS. 120 W MAX.

6x9" (16 x 24 cm) 2-Way Coaxial Speaker

- Frequency Response: 65 Hz - 20 kHz
- Sensitivity: 88 dB/W/m
- Impedance: 4Ω
- Magnet: 20 Oz
- Vice coil: 25mm
- Tweeter: Φ50mm mylar cone tweeter



CX2540 25 W RMS. 100 W MAX.

4.2" (10mm) 2-Way Coaxial Speaker

- Frequency: 105Hz-22000Hz
- Impedance: 4Ω
- Sensitivity: 86dB/w/m
- Magnet: : 6.5oz
- Voice coil: Φ25.4 mm
- Tweeter: Φ28mm Mylar balanced dome tweeter

Common Features

- Blue infection cone with rubber edge



CX2555 30 W RMS. 120 W MAX.

5.25" (13mm) 2-Way Coaxial Speaker

- Frequency: 100Hz-22000Hz
- Impedance: 4Ω
- Sensitivity: 87dB/w/m
- Magnet: : 6.5oz
- Voice coil: Φ25.4 mm
- Tweeter: Φ28mm Mylar balanced dome tweeter



CX2565 35 W RMS. 140 W MAX.

6.5" (16.5mm) 3-Way Coaxial Speaker

- Frequency: 60Hz-22000Hz
- Impedance: 4Ω
- Sensitivity: 88dB/w/m
- Magnet: : 9oz
- Voice coil: Φ25.4 mm
- Tweeter: Φ28mm Mylar balanced dome tweeter



CX2569 40 W RMS. 160 W MAX.

6x9" (255mm) 3-Way Coaxial Speaker

- Frequency Response: 55Hz-2200Hz
- Sensitivity: 89 dB/W/m
- Impedance: 4Ω
- Magnet: : 20oz
- Voice coil: Φ30.5mm
- Tweeter: Φ55mm Mylar balanced dome tweeter



YL-A1085R 20 W RMS. **80 W MAX.**

4" (10 cm) 2-Way Coaxial Speaker

- Frequency response: 100Hz-22K Hz
- Impedance: 4Ω
- Sensitivity: 85dB/w/m
- Magnet: 5.4 OZ
- Voice coil: ø25mm
- Tweeter: Ø28mm mylar balanced dome tweeter
- Cone: silver gery color paper with rubber edge



YL-A1385R 25 W RMS. **100 W MAX.**

5.25" (13 cm) 2-Way Coaxial Speaker

- Frequency response: 90Hz-22K Hz
- Impedance: 4Ω
- Sensitivity: 86dB/w/m
- Magnet: 6.5 OZ
- Voice coil: ø25mm
- Tweeter: Ø28mm mylar balanced dome tweeter



YL-A1685R 30 W RMS. **120 W MAX.**

6.5" (17 cm) 4-Way Coaxial Speaker

- Frequency response: 70Hz-22K Hz
- Impedance: 4Ω
- Sensitivity: 87dB/w/m
- Magnet: 10 OZ
- Voice coil: ø25mm
- Tweeter: ø29mm silk dome
- Tweeter: ø15mm mylar dome
- Tweeter: ø11mm mylar dome



YL-A6995R 40 W RMS. **140 W MAX.**

6x9" (16x24 cm) 5-Way Coaxial Speaker

- Frequency response: 65Hz-22K Hz
- Impedance: 4Ω
- Sensitivity: 89dB/w/m
- Magnet: 20 OZ
- Voice coil: ø30mm
- Tweeter: ø38mm silk dome
- Tweeter: ø15mm mylar dome
- Tweeter: ø11mm + ø9mm mylar dome



YL-A1086R 20 W RMS. **80 W MAX.**

4" (10 cm) 2-Way Coaxial Speaker

- Frequency Response: 100 Hz - 22 kHz
- Sensitivity: 84 dB/W/m
- Impedance: 4Ω
- Magnet: 5.4 Oz
- Vice coil: 25mm
- Tweeter: Ø28mm mylar half dome tweeter

Common Features

- silve gery color paper with rubber edge



YL-A1386R 25 W RMS. **110 W MAX.**

5.25" (13 cm) 2-Way Coaxial Speaker

- Frequency Response: 95 Hz - 20 kHz
- Sensitivity: 85 dB/W/m
- Impedance: 4Ω
- Magnet: 6.5 Oz
- Vice coil: 25mm
- Tweeter: Ø28mm mylar half dome tweeter



YL-A1686R 30 W RMS. **130 W MAX.**

6.5" (17 cm) 4-Way Coaxial Speaker

- Frequency Response: 75 Hz - 20 kHz
- Sensitivity: 87 dB/W/m
- Impedance: 4Ω
- Magnet: 10 Oz
- Vice coil: 25mm
- Tweeter: Ø40mm mylar cone tweeter



YL-A6996R 35 W RMS. **150 W MAX.**

6x9" (16 x 24 cm) 5-Way Coaxial Speaker

- Frequency Response: 65 Hz - 20 kHz
- Sensitivity: 88 dB/W/m
- Impedance: 4Ω
- Magnet: 20 Oz
- Vice coil: 25mm
- Tweeter: Ø29mm mylar dome tweeter

COAXIAL SPEAKER



20 W RMS. 90 W MAX.

4" (10 cm) 2-Way Coaxial Speaker

- Frequency Response: 110 Hz - 20 kHz
- Sensitivity: 84 dB/W/m
- Impedance: 4Ω
- Magnet: 5.4 Oz
- Vice coil: 25mm
- Tweeter: Ø28mm mylar half dome tweeter

Common Features

- Black pp cone with rubber edge



YL-F3255 25 W RMS. 110 W MAX.

5.25" (13 cm) 2-Way Coaxial Speaker

- Frequency Response: 95 Hz - 20 kHz
- Sensitivity: 85 dB/W/m
- Impedance: 4Ω
- Magnet: 6.5 Oz
- Vice coil: 25mm
- Tweeter: Ø28mm mylar half dome tweeter



YL-F3265 30 W RMS. 130 W MAX.

6.5" (17 cm) 2-Way Coaxial Speaker

- Frequency Response: 75 Hz - 20 kHz
- Sensitivity: 87 dB/W/m
- Impedance: 4Ω
- Magnet: 10 Oz
- Vice coil: 25mm
- Tweeter: Ø28mm mylar half dome tweeter



YL-F3269 35 W RMS. 150 W MAX.

6x9" (16 x 24 cm) 4-Way Coaxial Speaker

- Frequency Response: 68 Hz - 20 kHz
- Sensitivity: 88 dB/W/m
- Impedance: 4Ω
- Magnet: 20 Oz
- Vice coil: 25mm
- Mid-range: Ø58mm mylar cone tweeter
- Tweeter: Ø20mm mylar balanced dome



YL-F1540G 15 W RMS. 80 W MAX.

4" (10 cm) 2-Way Coaxial Speaker

- Frequency Response: 105 Hz - 20 kHz
- Sensitivity: 85 dB/W/m
- Impedance: 4Ω
- Magnet: 5.4 Oz
- Vice coil: 25mm
- Tweeter: Ø28mm mylar balanced dome tweeter

Common Features

- Grey black injection pp cone with rubber edge



YL-F1550G 20 W RMS. 100 W MAX.

5.25" (13 cm) 2-Way Coaxial Speaker

- Frequency Response: 95 Hz - 20 kHz
- Sensitivity: 85 dB/W/m
- Impedance: 4Ω
- Magnet: 6.5 Oz
- Vice coil: 25mm
- Tweeter: Ø28mm mylar balanced dome tweeter



YL-F1565G 25 W RMS. 120 W MAX.

6.5" (17 cm) 3-Way Coaxial Speaker

- Frequency Response: 75 Hz - 20 kHz
- Sensitivity: 86 dB/W/m
- Impedance: 4Ω
- Magnet: 8 Oz
- Vice coil: 25mm
- Tweeter: Ø28mm mylar balanced dome tweeter



YL-F1569G 35 W RMS. 140 W MAX.

6x9" (16 x 24 cm) 4-Way Coaxial Speaker

- Frequency Response: 65 Hz - 20 kHz
- Sensitivity: 88 dB/W/m
- Impedance: 4Ω
- Magnet: 20 Oz
- Vice coil: 25mm
- Tweeter: Ø58mm mylar cone tweeter



YL-F3640 20 W RMS. 80 W MAX.

- 4" (10 cm) 2-Way Coaxial Speaker
- Frequency response: 110Hz-20K Hz
- Impedance: 4Ω
- Sensitivity: 85dB/w/m
- Magnet: 5.4 OZ
- Voice coil: ø25mm
- Tweeter: ø28mm mylar balanced dome
- Cone: black paper cone with rubber dege



YL-F3655 25W RMS. 100 W MAX.

- 5.25" (13 cm) 2-Way Coaxial Speaker
- Frequency response: 95Hz-20K Hz
- Impedance: 4Ω
- Sensitivity: 86dB/w/m
- Magnet: 6.5 OZ
- Voice coil: ø25mm
- Tweeter: ø28mm mylar balanced dome



YL-F3665 30W RMS. 120 W MAX.

- 6.5" (17 cm) 2-Way Coaxial Speaker
- Frequency response: 75Hz-20K Hz
- Impedance: 4Ω
- Sensitivity: 87dB/w/m
- Magnet: 8 OZ
- Voice coil: ø25mm
- Tweeter: ø28mm mylar balanced dome



YL-F3669 35W RMS. 140 W MAX.

- 6*9" (16*24 cm) 3-Way Coaxial Speaker
- Frequency response: 68Hz-20K Hz
- Impedance: 4Ω
- Sensitivity: 88dB/w/m
- Magnet: 16 OZ
- Voice coil: ø25mm
- Mid-range: ø58mm mylar cone
- Tweeter: ø28mm mylar balanced dome



YL-F3740 20 W RMS. 80 W MAX.

- 4" (10 cm) 2-Way Coaxial Speaker
- Frequency response: 110Hz-20K Hz
- Impedance: 4Ω
- Sensitivity: 85dB/w/m
- Magnet: 5.4 OZ
- Voice coil: ø25mm
- Tweeter: ø28mm mylar balanced dome
- Cone: black PP cone with rubber dege



YL-F3755 25W RMS. 100 W MAX.

- 5.25" (13 cm) 2-Way Coaxial Speaker
- Frequency response: 95Hz-20K Hz
- Impedance: 4Ω
- Sensitivity: 86dB/w/m
- Magnet: 6.5 OZ
- Voice coil: ø25mm
- Tweeter: ø28mm mylar balanced dome



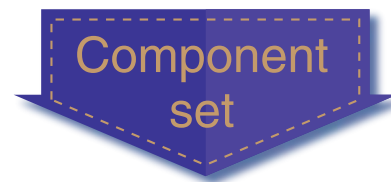
YL-F3765 30W RMS. 120 W MAX.

- 6.5" (17 cm) 4-Way Coaxial Speaker
- Frequency response: 75Hz-20K Hz
- Impedance: 4Ω
- Sensitivity: 87dB/w/m
- Magnet: 8 OZ
- Voice coil: ø25mm
- Tweeter: ø28mm mylar balanced dome



YL-F3769 35W RMS. 140 W MAX.

- 6*9" (16*24 cm) 4-Way Coaxial Speaker
- Frequency response: 68Hz-20K Hz
- Impedance: 4Ω
- Sensitivity: 88dB/w/m
- Magnet: 20 OZ
- Voice coil: ø25mm
- Mid-range: ø58mm mylar cone
- Tweeter: ø20mm mylar balanced dome



COMPONENT SET



TZ606 40 W RMS · 120 W MAX.

6.5" 2 way componet set
Frequency response: 72~20KHz
Impedance: 4Ω
Sensitivity: 86dB/w/m
Strontium magnet: 10 OZ
voice coil: 1"(ø25mm)
Cone: paper cone with rubber edge
Tweeter: Ø25mm silk dome tweeter



TZ606 40 W RMS · 120 W MAX.

6.5" 2 way componet set
Frequency response: 72~20KHz
Impedance: 4Ω
Sensitivity: 86dB/w/m
Strontium magnet: 10 OZ
voice coil: 1"(ø25mm)
Cone: paper cone with rubber edge
Tweeter: Ø25mm silk dome tweeter



TZ607 40 W RMS · 120 W MAX.

6.5" 2 way componet set
Frequency response: 68~20KHz
Impedance: 4Ω
Sensitivity: 86dB/w/m
Crossover network unite: 3.5KHz.12dB/oct
voice coil: 1"(ø25mm)
Cone: Injection pp cone with rubber edge
Tweeter: Ø25mm silk dome tweeter



YL-TZ178LA 40 W RMS · 160 W MAX.

6.5" 2 -way component set
Frequency response:65~22000Hz
Impedance:4Ω
Sensitivity:88dB/w/m
Strontium magnet: 15 OZ
voice coil:ø30mm
Cone: silver color paper cone with rubber edge
Tweeter:ø38mm silk dome Aluminium tweeter



YL-TZ656A 40 W RMS · 160 W MAX.

6.5" 2-way component set
Frequency response:65~22000Hz
Impedance:4Ω
Sensitivity:90dB/w/m
Strontium magnet: 15 OZ
voice coil:ø30mm
Cone: German modified pp weave cone with rubber edge
tweeter: ø38mm silk dome Aluminium tweeter



YL-TZ6503 40 W RMS · 120 W MAX.

6.5" 2 -way component set
Frequency response:68~25000Hz
Impedance: 4Ω
Sensitivity: 87dB/w/m
Strontium magnet: 13 OZ
voice coil:ø25mm
Cone: Glass fiber cone with rubber edge
Tweeter:ø38mm silk dome tweeter

COMPONENT SET



YL-TZ6502 35 W RMS· 105 W MAX.

6.5" 2-way component set

- Frequency response: 70 ~ 25000Hz
- Impedance: 4Ω
- Sensitivity: 88dB/w/m
- Strontium magnet: 100Z
- voice coil: ø25mm
- Cone: Black paper cone with rubber edge
- tweeter: ø38mm silk dome tweeter



YL-TZ605 60 W RMS· 180 W MAX.

6.5" 2-Way Component Set

- Frequency response: 65 ~ 25000Hz
- Impedance: 4Ω
- Sensitivity: 89dB/w/m
- Strontium magnet: 25 OZ
- voice coil: ø38mm
- Cone: injection cone with pu edge
- tweeter: Aluminum tweeter



YL-TZ6528 40 W RMS· 160 W MAX.

6.5" 2-Way Component Set

- Frequency: 65Hz-22KHz
- Impedance: 4Ω
- Sensitivity: 89dB/w/m
- Magnet: 15 OZ
- Vice coil: 30 mm
- Cone: Black glass fiber Cone With Rubber edge
- Tweeter: Ø38mm silk dome tweeter



YL-TZ6517A 35 W RMS· 140 W MAX.

6.5" 2-Way Component Set

- Frequency: 65Hz-22KHz
- Impedance: 4Ω
- Sensitivity: 89dB/w/m
- Magnet: 13 OZ
- Vice coil: 25 mm
- Cone: Black glass fiber Cone With Rubber edge



YL-TZ6517 35 W RMS· 140 W MAX.

6.5" 2 way component set

- Frequency response: 67 ~ 22000Hz
- Impedance: 4Ω
- Sensitivity: 87dB/w/m
- Strontium magnet: 15 OZ
- voice coil: ø25mm
- Cone: Black paper cone with rubber edge
- tweeter: ø38mm silk dome tweeter



YL-TZ6.5B 35 W RMS· 105 W MAX.

6.5" 2 way component set

- Frequency response: 78 ~ 25000Hz
- Impedance: 4Ω
- Sensitivity: 88dB/w/m
- Strontium magnet: 10 OZ
- voice coil: ø25mm
- Cone: Grey black paper cone with rubber edge
- tweeter: ø29mm silk dome tweeter



YL-W6.5 30 W RMS · 120 W MAX.

6.5" 2 way component set

- Frequency response: 67 ~ 22000Hz
- Impedance: 4Ω
- Sensitivity: 87dB/w/m
- Strontium magnet: 10 OZ
- voice coil: ø25mm
- Cone: Paper cone with rubber edge
- tweeter: ø29mm silk dome tweeter



YL-TZ602 45 W RMS · 150 W MAX.

6.5" 2 way packaged component set

- Frequency response: 68 ~ 25KHz
- Impedance: 4Ω
- Sensitivity: 90dB/w/m
- Strontium magnet: 13 OZ
- voice coil: ø25mm
- Cone: Black paper cone with rubber edge
- tweeter: Aluminum pro Audio tweeter



YL-TZ6509 35 W RMS · 105 W MAX.

6.5" 2-Way Component Set

- Frequency response: 78 ~ 25000Hz
- Impedance: 4Ω
- Sensitivity: 88dB/w/m
- Strontium magnet: 10 OZ
- voice coil: ø25mm
- Cone: Grey black paper cone with rubber edge
- tweeter: ø38mm silk dome tweeter



YL-TZ6566 30W RMS · 120 W MAX.

6.5" 2 way component set

- Frequency response: 65 ~ 22KHz
- Impedance: 4Ω
- Sensitivity: 88dB/w/m
- Strontium magnet: 10 OZ
- voice coil: ø25mm
- Cone: Black carbon fiber ifedtion cone with rubber edge
- tweeter: ø29mm silk dome tweeter



YL-TZ6531 30 W RMS · 100 W MAX.

6.5" 2-Way Component Set

- Frequency: 65Hz-22KHz
- Impedance: 4Ω
- Sensitivity: 89dB/w/m
- Magnet: 10 OZ
- Vice coil: 25 mm
- Cone: Black color paper cone with rubber edge
- Tweeter: ø38mm silk dome tweeter



YL-TZ6545 30W RMS · 105 W MAX.

6.5" 2 way component set

- Frequency response: 76 ~ 22000Hz
- Impedance: 4Ω
- Sensitivity: 87dB/w/m
- Strontium magnet: 10 OZ
- voice coil: ø25mm
- Cone: Black infedtion cone with rubber edge
- tweeter: ø29mm silk dome tweeter

COMPONENT SET



TZ603 35 W RMS • 105 W MAX.

6.5" 2 way packaged component set

Frequency response: 65 ~ 22000Hz
 Impedance: 4Ω
 Sensitivity: 86dB/w/m
 Crossover network unite: 3.5KHz.12dB/oct
 voice coil:ø25mm
 Cone : Grey black carbon injection cone with rubber edge
 Tweeter:φ38mm silk dome tweeter



TZ604S 35 W RMS • 105 W MAX.

6.5" 2 way packaged component set

Frequency response: 65 ~ 22000Hz
 Impedance: 4Ω
 Sensitivity: 86dB/w/m
 Crossover network unite: 3.5KHz.12dB/oct
 voice coil:ø25mm
 Cone : Grey black carbon injection cone with rubber edge
 Tweeter:φ38mm silk dome tweeter



TZ609 60 W RMS • 180 W MAX.

6.5" 2 way componet set

Frequency response: 68 ~ 22KHz
 Impedance: 4Ω
 Sensitivity: 90dB/w/m
 Strontium magnet: 15 OZ
 voice coil: 1"(ø25mm)
 Cone: Paper cone with bamboo fiber with rubber edge
 Tweeter: Φ25mm Ti diaphragm dome tweeter



TZ605 50 W RMS • 150 W MAX.

6.5" 2 way componet set

Frequency response: 65 ~ 20KHz
 Impedance: 4Ω
 Sensitivity: 88dB/w/m
 Strontium magnet: 15 OZ
 voice coil: 1"(ø25mm)
 Cone: Glass fiber cone with rubber edge
 Tweeter: Φ25mm silk dome tweeter



TZ608 40 W RMS • 120 W MAX.

6.5" 2 way componet set

Frequency response: 72 ~ 20KHz
 Impedance: 4Ω
 Sensitivity: 86dB/w/m
 Strontium magnet: 10 OZ
 voice coil: 1"(ø25mm)
 Cone: paper cone with rubber edge
 Tweeter: Φ20mm silk dome tweeter



TZ610 50 W RMS • 150 W MAX.

6.5" 2 way componet set

Frequency response: 72 ~ 20KHz
 Impedance: 4Ω
 Sensitivity: 88dB/w/m
 Strontium magnet: 15 OZ
 voice coil: 1"(ø25mm)
 Cone: Glass fiber cone with rubber edge
 Tweeter: Φ25mm silk dome tweeter



YL-TZ6501 35 W RMS · 105 W MAX.

6.5" 2-way component set

- Frequency response: 78 ~ 25000Hz
- Impedance: 4Ω
- Sensitivity: 88dB/w/m
- Strontium magnet: 10 OZ
- voice coil: ø25mm
- Cone: Black paper cone with rubber edge
- tweeter: ø39mm silk dome tweeter



YL-TZ1741B 35 W RMS · 120 W MAX.

6.5" 2-Way Component Set

- Frequency: 80Hz-20KHz
- Impedance: 4Ω
- Sensitivity: 85dB/w/m
- Magnet: 3 OZ
- voice coil: ø25 mm
- Cone: Black injection cone with rubber edge
- Tweeter: ø29mm silk dome tweeter



YL-TZ6556 30 W RMS · 100 W MAX.

6.5" 2 way packaged component set

- Frequency response: 65 ~ 22000Hz
- Impedance: 4Ω
- Sensitivity: 86dB/w/m
- Strontium magnet: 10 OZ
- voice coil: ø25mm
- Cone: paper cone with rubber edge
- tweeter: ø28mm mylar half dome tweeter



YL-TZ1763 30 W RMS · 90 W MAX.

6.5" 2-Way Component Set

- Frequency response: 88 ~ 20000Hz
- Impedance: 4Ω
- Sensitivity: 86dB/w/m
- Strontium magnet: 8 OZ
- voice coil: ø25mm
- Cone: Black injection cone with rubber edge
- tweeter: ø28mm mylar half dome tweeter



YL-TZ1764 30 W RMS · 90 W MAX.

6.5" 2-way component set

- Frequency response: 88 ~ 20000Hz
- Impedance: 4Ω
- Sensitivity: 86dB/w/m
- Strontium magnet: 8 OZ
- voice coil: ø25mm
- Cone: Gery color cone with rubber edge
- tweeter: ø28mm mylar half dome tweeter



YL-TZ65C 30 W RMS · 120 W MAX.

6.5" 2-way component set

- Frequency response: 88 ~ 20000Hz
- Impedance: 4Ω
- Sensitivity: 86dB/w/m
- Strontium magnet: 8 OZ
- voice coil: ø25mm
- Cone: Black color injection cone with rubber edge
- tweeter: ø28mm mylar half dome tweeter

SUBWOOFER



YL-SA2519 500 W RMS · **1500 W MAX.**

10" (255mm) Subwoofer

- Frequency: 30Hz-1000Hz
- Impedance: 4Ω
- Sensitivity: 87 dB/w/m
- Magnet: : 50 OZx2
- Voice coil: Ø65 mm
- Cone: Black Paper Cone with Black foam edge

YL-SA3019 800 W RMS · **2400 W MAX.**

12" (315mm) Subwoofer

- Frequency: 30Hz-1000Hz
- Impedance: 4Ω
- Sensitivity: 88 dB/w/m
- Magnet: : 60 OZx2
- Voice coil: Ø76 mm
- Cone: Black Paper Cone with Black foam edge



YL-SR5710 450 W RMS · **1300W MAX.**

10" (267mm) Subwoofer

- Frequency response: 36 ~ 25000Hz
- Impedance: 3.4Ω+3.4Ω
- Sensitivity: 86dB/w/m
- Strontium magnet: 45OZx2
- voice coil: ø50mm
- Cone: Black Non-press paper cone with rubber edge

YL-SR5712 600 W RMS · **1800W MAX.**

12" (320mm) Subwoofer

- Frequency response: 34 ~ 25000Hz
- Impedance: 3.5Ω+3.5Ω
- Sensitivity: 88dB/w/m
- Strontium magnet: 50OZx2
- voice coil: ø60mm
- Cone: Black Non-press paper cone with rubber edge



YL-SR4110 300 W RMS · **900W MAX.**

10" (267mm) Subwoofer

- Frequency response: 36 ~ 20000Hz
- Impedance: 4Ω+4Ω
- Sensitivity: 86dB/w/m
- Strontium magnet: 32OZx2
- voice coil: ø50mm
- Cone: Black mica pp cone with rubber edge

YL-SR4112 600 W RMS · **1800W MAX.**

12" (320mm) Subwoofer

- Frequency response: 34 ~ 15000Hz
- Impedance: 4Ω+4Ω
- Sensitivity: 87dB/w/m
- Strontium magnet: 32OZx2
- voice coil: ø50mm
- Cone: Black mica pp cone with rubber edge



YL-SF309DL 300 W RMS · **900 W MAX.**

12" (320mm) Subwoofer

- Frequency: 30Hz-1000Hz
- Impedance: 4Ω+4Ω
- Sensitivity: 87 dB/w/m
- Magnet: : 40 OZx2
- Voice coil: Ø50 mm
- Cone: Black color injection cone with leather edge



PK10 350 W RMS. **900 W MAX.**

10" (267mm) slim subwoofer

- Frequency: 35Hz-1200Hz
- Impedance: 4Ω+4Ω
- Sensitivity: 85 dB/w/m
- Magnet: : 50 OZ
- Voice coil: ø50 mm
- Cone: Black paper cone with rubber edge

PK12 500 W RMS. **1500 W MAX.**

12" (310mm) slim Subwoofer

- Frequency: 30Hz-1000Hz
- Impedance: 8Ω/2Ω/4Ω+4Ω
- Sensitivity: 87 dB/w/m
- Magnet: : 50 OZx2
- Voice coil: ø50 mm
- Cone: Black paper cone with rubber edge



YL-SR4510 250 W RMS. **750W MAX.**

10"(267mm) Subwoofer

- Frequency response:40~25000Hz
- Impedance: 4Ω+4Ω
- Sensitivity:87dB/w/m
- Strontium magnet: 50OZ
- voice coil:ø50mm
- Cone: Black Non-press paper cone with rubber edge

YL-SR4510 300 W RMS. **900W MAX.**

12"(320mm) Subwoofer

- Frequency response: 38~25000Hz
- Impedance: 4Ω+4Ω
- Sensitivity: 88dB/w/m
- Strontium magnet: 50OZ
- voice coil: ø50mm
- Cone: Black Non-press paper cone with rubber edge



SWL10 250 W RMS. **750 W MAX.**

10" (267mm) slim subwoofer

- Frequency: 32Hz-400Hz
- Impedance: 4Ω+4Ω
- Sensitivity: 85 dB/w/m
- Magnet: : 32 OZ x 2
- Voice coil: ø50 mm
- Cone: Black color injection cone with rubber edge

SWL12 350 W RMS. **1000 W MAX.**

12" (310mm) slim Subwoofer

- Frequency: 32Hz-700Hz
- Impedance: 8Ω/2Ω/4Ω+4Ω
- Sensitivity: 86 dB/w/m
- Magnet: : 45 OZ x 2
- Voice coil: ø50 mm
- Cone: Black color paper cone with rubber edge



YL-SW-105 250 W RMS. **750 W MAX.**

10"(310mm) Subwoofer

- Frequency: 30Hz-1000Hz
- Impedance: 8Ω/2Ω/4Ω+4Ω
- Sensitivity: 89 dB/w/m
- Magnet: : 40 OZX2
- Voice coil: Ø50 mm
- Cone: Black color injection cone with rubber edge

YL-SW-205 300 W RMS. **900 W MAX.**

12"(320mm) Subwoofer

- Frequency: 32Hz-1000Hz
- Impedance: 8Ω/2Ω/4Ω+4Ω
- Sensitivity: 89 dB/w/m
- Magnet: : 45 OZX2
- Voice coil: Ø50 mm
- Cone: Black color injection cone with rubber edge

SUBWOOFER



SW-106 150 W RMS. **450 W MAX.**

10" (260mm) Subwoofer

- Frequency: 32Hz-1000Hz
- Impedance: 8Ω/2Ω/4Ω+4Ω
- Sensitivity: 86 dB/w/m
- Magnet: : 35OZ
- Voice coil: Ø38 mm
- Cone: Black color injection cone with rubber edge

SW-206 200 W RMS. **600 W MAX.**

12" (310mm) Subwoofer

- Frequency: 30Hz-1000Hz
- Impedance: 8Ω/2Ω/4Ω+4Ω
- Sensitivity: 87dB/w/m
- Magnet: : 40 OZ
- Voice coil: Ø44 mm
- Cone: Black color injection cone with rubber edge



YL-F2511 150 W RMS. **450 W MAX.**

10" (261mm) Subwoofer

- Frequency: 35Hz-1000Hz
- Impedance: 8Ω/2Ω/4Ω+4Ω
- Sensitivity: 87 dB/w/m
- Magnet: : 35 OZ
- Voice coil: Ø38 mm
- Cone: Black Injection Dished PP Cone with Black Rubber edge

YL-F3011 200 W RMS. **600 W MAX.**

12" (312mm) Subwoofer

- Frequency: 35Hz-1000Hz
- Impedance: 8Ω/2Ω/4Ω+4Ω
- Sensitivity: 88 dB/w/m
- Magnet: : 40 OZ
- Voice coil: Ø44mm
- Cone: Black Injection Dished PP Cone with Black Rubber edge



YL-W1095 150 W RMS. **450 W MAX.**

10" (267mm) slim subwoofer

- Frequency: 32Hz-400Hz
- Impedance: 4Ω+4Ω
- Sensitivity: 85 dB/w/m
- Magnet: : 40 OZ
- Voice coil: ø50 mm
- Cone: Silver aluminum cone with rubber edge

YL-W1295 200 W RMS. **600 W MAX.**

12" (310mm) slim Subwoofer

- Frequency: 32Hz-700Hz
- Impedance: 8Ω/2Ω/4Ω+4Ω
- Sensitivity: 86 dB/w/m
- Magnet: : 45 OZ
- Voice coil: ø50 mm
- Cone: Silver aluminium cone with rubber edge



YL-W1410 150 W RMS. **450 W MAX.**

10" (267mm) slim subwoofer

- Frequency: 32Hz-400Hz
- Impedance: 4Ω+4Ω
- Sensitivity: 85 dB/w/m
- Magnet: : 40 OZ
- Voice coil: ø50 mm
- Cone: Silver aluminum cone with rubber edge

YL-W1412 200 W RMS. **600 W MAX.**

12" (310mm) slim Subwoofer

- Frequency: 32Hz-700Hz
- Impedance: 8Ω/2Ω/4Ω+4Ω
- Sensitivity: 86 dB/w/m
- Magnet: : 45 OZ
- Voice coil: ø50 mm
- Cone: Silver aluminum cone with rubber edge



SWS10 200 W RMS. **600 W MAX.**
10" (267mm) Subwoofer

- Frequency: 32Hz-2000Hz
- Impedance: 8Ω/2Ω/4Ω+4Ω
- Sensitivity: 86 dB/w/m
- Magnet: : 35 OZ
- Voice coil: Φ38 mm
- Cone: Black color zmpp come with rubber edge

SWS12 250W RMS. **750W MAX.**
12" (320mm) Subwoofer

- Frequency: 30Hz-1000Hz
- Impedance: 8Ω/2Ω/4Ω+4Ω
- Sensitivity: 87 dB/w/m
- Magnet: : 35 OZ
- Voice coil: Φ38mm
- Cone: Black color zmpp come with rubber edge



W3010T 100 W RMS. **300 W MAX.**
10" (261mm) Subwoofer

- Frequency: 35Hz-1000Hz
- Impedance: 8Ω/2Ω/4Ω+4Ω
- Sensitivity: 86 dB/w/m
- Magnet: : 35 OZ
- Voice coil: Φ38 mm
- Cone: Black PP Cone with Black foam edge

W3012T 150 W RMS. **450 W MAX.**
12" (312mm) Subwoofer

- Frequency: 35Hz-1000Hz
- Impedance: 8Ω/2Ω/4Ω+4Ω
- Sensitivity: 87 dB/w/m
- Magnet: : 40 OZ
- Voice coil: Φ44 mm
- Cone: Black PP Cone with Black foam edge



SW-104 100 W RMS. **300 W MAX.**
10" (260mm) Subwoofer

- Frequency: 32Hz-1000Hz
- Impedance: 8Ω/2Ω/4Ω+4Ω
- Sensitivity: 86 dB/w/m
- Magnet: : 35OZ
- Voice coil: Φ38 mm
- Cone: Black color injection cone with rubber edge

SW-204 150 W RMS. **450 W MAX.**
12" (310mm) Subwoofer

- Frequency: 30Hz-1000Hz
- Impedance: 8Ω/2Ω/4Ω+4Ω
- Sensitivity: 87dB/w/m
- Magnet: : 40 OZ
- Voice coil: Φ44 mm
- Cone: Black color injection cone with rubber edge



YL-SF1020P 100 W RMS. **300 W MAX.**
10" (267mm) Subwoofer

- Frequency: 35Hz-1000Hz
- Impedance: 4Ω+4Ω
- Sensitivity: 87 dB/w/m
- Magnet: : 35 OZ
- Voice coil: Φ38mm
- Cone: Grey color PP cone with rubber edge

YL-SF1220P 150 W RMS. **450 W MAX.**
12" (320mm) Subwoofer

- Frequency: 32Hz-1000Hz
- Impedance: 4Ω+4Ω
- Sensitivity: 88 dB/w/m
- Magnet: : 35 OZ
- Voice coil: Φ38 mm
- Cone: Grey color PP cone with rubber edge

BOOM BOX



BVP-T10 80 W RMS. 320 W MAX.

- Voice Coil: 1.5"(38.6mm) 3.2Ω
- Impedance: 4Ω
- Frequency response: 37~200Hz 37~2000Hz
- Sensitivity: 86±2dB/1W at 1m
- Max.SPL: 105±2dB/76W at 1m
- Dimensions: 482*296*312 (W*D*H)
- Amplifier: RMS 80W

BVP-T12 100 W RMS. 400 W MAX.

- Voice Coil: 1.75"(44.4mm) 3.2Ω
- Impedance: 4Ω
- Frequency response: 36~200Hz 36~2000Hz
- Sensitivity: 87±2dB/1W at 1m
- Max.SPL: 107±2dB/105W at 1m
- Dimensions: 482*344*366 (W*D*H)
- Amplifier: RMS 100W

BVP-T6.5 70 W RMS. 280 W MAX.

- Voice Coil: 1"(25mm) 4Ω
- Impedance: 4Ω
- Frequency response: 40~300Hz 40~2200Hz
- Sensitivity: 85±2dB/1W at 1m
- Max.SPL: 103±2dB/76W at 1m
- Amplifier: RMS 70W

BVP-T8 70 W RMS. 280 W MAX.

- Voice Coil: 1.25"(30mm) 4Ω
- Impedance: 4Ω
- Frequency response: 38~300Hz 40~2200Hz
- Sensitivity: 86±2dB/1W at 1m
- Max.SPL: 103±2dB/76W at 1m
- Amplifier: RMS 70W





VT-SR2110 100 W RMS. **400 W MAX.**

- Voice Coil: 2"(50mm)
- Impedance: 8/2Ω
- Frequency response: 40~300Hz
- Sensitivity: 115±2dB/1W at 1m
- Max.SPL: 109±2dB/150W at 1m
- Dimensions: 482*344*366 (W*D*H)
- Amplifier: RMS 100W

VT-SR2112 150 W RMS. **600 W MAX.**

- Voice Coil: 2"(50mm)
- Impedance: 8/2Ω
- Frequency response: 40~300Hz
- Sensitivity: 118±2dB/1W at 1m
- Max.SPL: 106±2dB/105W at 1m
- Dimensions: 482*296*312 (W*D*H)
- Amplifier: RMS 150W



TVP-M10 100 W RMS. **300 W MAX.**

- Voice Coil: 2"(50.5mm) 3.4Ω
- Impedance: 4Ω
- Frequency response: 40~200Hz, 40~1700Hz
- Sensitivity: 87±2dB/1W at 1m
- Max.SPL: 110±2dB/150W at 1m
- Dimensions: 372*(211+311)*323 (W*D*H)
- Amplifier: RMS 100W

TVP-M10 150 W RMS. **450 W MAX.**

- Voice Coil: 2"(50.5mm) 3.4Ω
- Impedance: 4Ω
- Frequency response: 38~200Hz, 38~1700Hz
- Sensitivity: 87±2dB/1W at 1m
- Max.SPL: 110±2dB/180W at 1m
- Dimensions: 424*(243+341)*363 (W*D*H)
- Amplifier: RMS 150W



VT-1020D 80 W RMS. **240 W MAX.**

- Voice Coil: 38mm
- Impedance: 2Ω
- Frequency response: 38~1700HZ
- Sensitivity: 87dB/1W at 1m
- Max.SPL: 107±2dB/150W at 1m
- Amplifier: RMS 80W

VT-1220D 100 W RMS. **400 W MAX.**

- Voice Coil: 44mm
- Impedance: 2Ω
- Frequency response: 35~2000HZ
- Sensitivity: 87dB/1W at 1m
- Max.SPL: 110±2dB
- Dimensions: 424*(243+341)*363 (W*D*H)
- Amplifier: RMS 100W



ATM-A8 P10B 150 W RMS. **500 W MAX.**

- 8" & 10" passive speaker Box with Amplifier paper cone with Foram Edge
- Voice Coil: 1.4"(35.6mm) 3.2Ω
- Impedance: 4 Ω
- Frequency response: 42~320HZ
- Sensitivity: 85±2dB/1W at 1m
- Dimensions: (305mm*305mm*266) (W*D*H)
- Amplifier: RMS 150W

BOOM BOX



SWS-10D 200 W RMS. 600W MAX.

- Voice Coil: 2"(50.5mm) 2.5Ω
- Impedance: 2Ω
- Sensitivity: 86±2dB/1W at 1m
- Fre.response: 32 ~ 150 Hz
- Max.SPL: 106±2dB/80W at 1m
- Dimensions: 519x(121+210)x378 (W*D*H)
- Amplifier: RMS 200W

SWS-12D 200 W RMS. 800W MAX.

- Voice Coil: 2"(50.5mm) 2.5Ω
- Impedance: 2Ω
- Sensitivity: 86±2dB/1W at 1m
- Fre.response: 35 ~ 150 Hz
- Max.SPL: 106±2dB/80W at 1m
- Dimensions: 519x(121+210)x378 (W*D*H)
- Amplifier: RMS 200W



ATM-10 80 W RMS. 320 W MAX.

- Caja amplificadora de Subwoofer pasivo tipo radiador
- Subwoofer 6.5" de 424g con iman de 15 onzas
- Cono de papel con borde de espuma
- Bobina 1.2" (30.6mm) 3.6 Ohm
- Impedancia: 4Ω
- potencia nominal: 80W RMS
- Max.power: 320W
- Respuesta de frecuencia: 36 ~ 20HZ
- Sensibilidad: 80+2dB/1W en 1m Sensibilidad: 80+2dB/1W en 1m



BVP-T10K 80 W RMS. 320 W MAX.

- Voice Coil: 1.5"(38.6mm) 3.2Ω
- Impedance: 4Ω
- Frequency response: 37~200Hz 37~2000Hz
- Sensitivity: 86±2dB/1W at 1m
- Max.SPL: 105±2dB/76W at 1m
- Dimensions: 482*296*312 (W*D*H)
- Amplifier: RMS 80W

BVP-T12K 100 W RMS. 400 W MAX.

- Voice Coil: 1.75"(44.4mm) 3.2Ω
- Impedance: 4Ω
- Frequency response: 36~200Hz 36~2000Hz
- Sensitivity: 87±2dB/1W at 1m
- Max.SPL: 107±2dB/105W at 1m
- Dimensions: 482*344*366 (W*D*H)
- Amplifier: RMS 100W



BVP-WT10 800 W RMS. 320 W MAX.

- Voice Coil: 1.5"(38.6mm) 3.2Ω
- Impedance: 4Ω
- Frequency response: 37~200Hz 37~2000Hz
- Sensitivity: 86±2dB/1W at 1m
- Max.SPL: 105±2dB/76W at 1m
- Dimensions: 482*296*312 (W*D*H)
- Amplifier: RMS 80W



VT-FT8 500 W RMS • 1000 W MAX.

8" Trapezoid Without Amplifier
Voice Coil: 2"(50.5mm) 2Ω+2Ω
Impedance: 1Ω (2Ω/2Ω)
Frequency response: 45Hz ~800Hz
Sensitivity: 85±2dB/1W at 1m
Rated power: 500W@1Ohm
MAX. power: 1000W@1Ohm
Max.SPL: 112±2dB/500W at 1m
Dimensions: 489*285*256 (W*D*H)

VT-FT8D 350 W RMS • 110±2dB/350W W MAX

8" Subwoofer With 1378gx2(48 Ozx2) Magnet
Voice Coil: 1.75"(44.43mm) 2Ω
Impedance: 2Ω
Frequency response: 50Hz ~800Hz
Sensitivity: 85±2dB/1W at 1m
Class Amplifier D
Rated power: 350W@2.0Ohm
Max.SPL: 110±2dB/350W at 1m
Dimensions: 489*285*256 (W*D*H)



VT-L2510 250 W RMS • 112±2dB/250W at 1m

10" Shallow mount amplifier bass enclosure
Vented Enclosure With Amplifier
PP Cone with Rubber Edge
Voice Coil: 1.5"(38.6mm) 2.0Ω
Impedance: 4.0Ω
Frequency response: 35 ~250Hz
Sensitivity: 84±2dB/1W at 1m
Rated power: 250W@2.0Ohm
Max.SPL: 112±2dB/250W at 1m
Dimensions: 466mm*(89mm+168.8mm)*380mm(W*D*H)

VT-L2512 250 W RMS • 112±2dB/350W at 1m

12" Shallow mount amplifier bass enclosure
Vented Enclosure With Amplifier
PP Cone with Rubber Edge
Voice Coil: 1.7"(44.43mm) 2.0Ω
Impedance: 2.0Ω
Frequency response: 50 ~250Hz
Sensitivity: 87±2dB/1W at 1m
Rated power: 350W@2.0Ohm
Max.SPL: 112±2dB/350W at 1m
Dimensions: 490mm*(125.8mm+187.6mm)*380mm(W*D*H)



SWS10C 200 W RMS • 108±2dB/200W at 1m

10" Amplifier Bass Trapezoid Enclosure
Vented Enclosure With Amplifier
Paper Cone with Foram Edge
Voice Coil: 1.5"(38.6mm) 4.0Ω
Impedance: 4.0Ω
Frequency response: 35 ~200Hz
Sensitivity: 85±2dB/1W at 1m
Rated power: 200W@2.0Ohm
Max.SPL: 108±2dB/200W at 1m
Dimensions: 519mm*(121mm+210mm)*378mmH(W*D*H)

SWS12C 200 W RMS • 108±2dB/200W at 1m

12" Amplifier Bass Trapezoid Enclosure
Vented Enclosure With Amplifier
Paper Cone with Foram Edge
Voice Coil: 2"(50.5mm) 2.0Ω
Impedance: 2.0Ω
Frequency response: 35 ~200Hz
Sensitivity: 86±2dB/1W at 1m
Rated power: 200W@2.0Ohm
Max.SPL: 108±2dB/200W at 1m
Dimensions: 519mm*(121mm+210mm)*378mmH(W*D*H)



TVP-S10K 120 W RMS • 106±2dB/120W at 1m

10" AMPLIFIED BASS ENCLOSURE
Vented Enclosure With Amplifier
Voice Coil: 1.5"(38.6mm) 4.0Ω
Impedance: 4.0Ω
Frequency response: 35 ~2000Hz
Sensitivity: 86±2dB/1W at 1m
Class Amplifier AB
Rated power: 120W@4.0Ohm
Max.SPL: 106±2dB/120W at 1m
Dimensions: (248+308)*340*424mm(W*D*H)

TVP-S12K 120 W RMS • 109±2dB/120W at 1m

12" AMPLIFIED BASS ENCLOSURE
Vented Enclosure With Amplifier
Impedance: 4.0Ω
Frequency response: 30 ~2000Hz
Sensitivity: 89±2dB/1W at 1m
Class Amplifier AB
Rated power: 120W@4.0Ohm
Max.SPL: 109±2dB/120W at 1m
Dimensions: (249+311)*380*460mm(W*D*H)

BOOM BOX



BVP-T10S 120 W RMS- 109±2dB/120W at 1m

10" Amplifier Bass Trapezoid Enclosure
 Vented Enclosure With Amplifier
 Paper Cone with Foram Edge
 Voice Coil: 1.5"(38.6mm) 4.0Ω
 Impedance: 4.0Ω
 Frequency response: 30~2000Hz
 Sensitivity: 89±2dB/1W at 1m
 Rated power: 120W@4.0Ω
 Max.SPL: 109±2dB/120W at 1m
 Dimensions: 294mm*310mm*500mm(W*D*H)



AHWB-P1 76 W RMS- 105 W MAX-

8" Amplifier Bass Enclosure
 Passive Radiators Box With Amplifier
 Paper Cone with Rubber Edge
 Frequency response: 52~2000Hz
 Impedance: 4Ω
 Sensitivity: 87±2dB/1W at 1m
 Rated power: 76W@4.0Ω
 Max.SPL: 105±2dB/76W at 1m
 Dimensions: 246*246*287 (W*D*H)



ATM-A10P10 300 W RMS- 600 W MAX-

8" Amplified Bass Enclosure
 Passive Radiators Box With Amplifier
 Voice Coil: 1.5"(38.6mm) 3.6Ω+3.6Ω
 Impedance: 4Ω+4Ω
 Frequency response: 50~800Hz
 Sensitivity: 83±2dB/1W at 1m
 Rated power: 300W@2.0Ω
 Max.Power: 600W
 Max.SPL: 107±2dB/300W at 1m
 Dimensions:(233mm+328mm)*270mm*257mm



TVP-S10M 130 W RMS- 400 W MAX- **TVP-S12M** 130 W RMS- 400 W MAX-

10" Amplifier Bass Trapezoid Enclosure
 Impedance: 4.0Ω
 Frequency response: 38Hz ~250Hz
 Sensitivity: 87±2dB/1W at 1m
 Rated power: 130W
 Max. power: 400W
 Max.SPL: 107±2dB/130W at distance of 1m
 Dimensions: 480mm*294mm*310mm(W*D*H)

12" Amplifier Bass Trapezoid Enclosure
 Impedance: 4.0Ω
 Frequency response: 38Hz ~122Hz
 Sensitivity: 88±2dB/1W at 1m
 Rated power: 130W
 Max. power: 400W
 Max.SPL: 109±2dB/130W at distance of 1m
 Dimensions: 480mm*343mm*359mm(W*D*H)



YL-X605 80 W RMS. 300 W MAX.

Frequency: 95HZ~6000HZ
Impedance: 4Ω
Sensitivity: 92dB
Magnet: 23 OZ
Voice Coil: 38 mm
Cone: Black paper cone wiht cloth edge



YL-X608 80 W RMS. 300 W MAX.

Frequency: 95HZ~6000HZ
Impedance: 4Ω
Sensitivity: 92dB
Magnet: 23 OZ
Voice Coil: 38 mm
Cone: Black paper cone wiht cloth edge



YL-X603 80 W RMS. 300 W MAX.

Frequency: 95HZ~6000HZ
Impedance: 4Ω
Sensitivity: 92dB
Magnet: 23 OZ
Voice Coil: 38 mm
Cone: Black PP cone wiht cloth edge



YL-X6.5PA \X8PA \X10PA

100 W RMS- 200W MAX. 150 W RMS- 300W MAX. 200 W RMS- 400W MAX.

6.5"(167mm) 8"(208mm) 10"(257mm) Subwoofer
Frequency response: 70~9000Hz /60~6000Hz /50~3000Hz
Impedance: 4Ω
Sensitivity: 92±2dB/1W at 1m
Strontium magnet: 25OZ / 30OZ / 35OZ
voice coil: ø38.5mm / ø38.5mm / ø50.5mm
Cone: Black Paper cone with Foram Edge



YL-X609 40 W RMS. 160 W MAX.

Frequency: 93HZ~6000HZ
Impedance: 4Ω
Sensitivity: 90dB
Magnet: 20 OZ
Voice Coil: 30 mm
Cone: Black paper cone wiht cloth edge



YL-X602 30 W RMS. 120 W MAX.

Frequency: 80HZ~15000HZ
Impedance: 4Ω
Sensitivity: 88dB
Magnet: 15 OZ
Voice Coil: 25 mm
Cone: Black paper cone wiht cloth edge

MIDRANGE



BM7706 30 W RMS • 90 W MAX.

Ø75mm carbon fiber cone with rubber edge
 Ø20.4mm Slik dome tweeter
 1.3inch (Ø32.88mm) KSV voice coil
 Frequency response: 180 ~ 25000Hz
 Impedance: 4Ω
 Sensitivity: 84dB/w/m±2db
 Max.power: 90W Use Capacitor: 56uf/100v
 Neodymium magnet size: Ø31.5*Ø10*6.0t(N35H)



BM7002 30 W RMS • 90 W MAX.

Ø68.5mm Paper cone with cloth edge
 1inch (Ø25.5mm) KSV voice coil
 Neodymium magnet size: Ø24.5*Ø10*4.5t(N42H)
 Ø13.28mm Slik dome tweeter
 Frequency response: 600 ~ 12000Hz
 Sensitivity: 82dB/w/m±2db
 Impedance: 4.0Ω±5db



M7003 30 W RMS • 90 W MAX.

Ø68.5mm Paper cone with cloth edge
 1inch (Ø25.5mm) KSV voice coil
 Neodymium magnet size: Ø24.5*Ø10*4.5t(N42H)
 Ø13.28mm Slik dome tweeter
 Frequency response: 600 ~ 12000Hz
 Sensitivity: 82dB/w/m±2db
 Impedance: 4.0Ω±5db



M7706 30 W RMS • 90 W MAX.

Ø75mm carbon fiber cone with rubber edge
 Ø20.4mm Slik dome tweeter
 1.3inch (Ø32.88mm) KSV voice coil
 Frequency response: 180 ~ 25000Hz
 Impedance: 4Ω
 Sensitivity: 84dB/w/m±2db
 Max.power: 90W Use Capacitor: 56uf/100v
 Neodymium magnet size: Ø31.5*Ø10*6.0t(N35H)



M7707 30 W RMS • 90 W MAX.

Ø75mm Black glass fiber cone with pu edge
 0.8inch (20.4mm) KSV voice coil
 Magnet size: Ø60*Ø24*10t,Y30
 Frequency response: 120 ~ 12000Hz
 Sensitivity: 86dB/w/m±2db
 Impedance: 4.0Ω
 Rated power: 30W Use Capacitor: 22 µF
 Max.power: 90W Use Capacitor: 22 µF



M7703 30 W RMS • 90 W MAX.

Ø77mm Black bulletproof body cone with Rubber edge
 2inch (20.4mm) ASV voice coil
 Magnet size: Ø60*Ø24*9.0t (3.77oz)
 Frequency response: 120 ~ 25000Hz
 Crossover network unit: 1.2KHz 2.5KHz, 12dB/oct
 Sensitivity: 88dB/w/m
 Impedance: 4Ω
 Rated power: 30W Use Capacitor: 22 µF
 Max.power: 90W Use Capacitor: 22 µF



M8201 30 W RMS. 120 W MAX.

3.25inch Mid range
3.25 inch German modified pp cone
Rubber surround edge
0.8 inch (20.4mm) CSV voice coil
Sensitivity: 88dB/w/m
Impedance: 5Ω
Magnet size: Φ50×Φ26×6mm



M7701 30 W RMS. 120 W MAX.

3 inch Mid range
3 inch black kevlar fiber cone
PU surround edge
0.8 inch (20.4mm) ASV voice coil
Sensitivity: 87 dB/w/m
Impedance: 5Ω
Neodymium magnet size: Φ50×Φ26×6.0t N35H (2.25 oz)



M8202 30 W RMS. 120 W MAX.

3.25inch Mid range
3.25 inch black kevlar fiber cone
Rubber surround edge
0.8 inch (20.4mm) ASV voice coil
Sensitivity: 86dB/w/m
Impedance: 5Ω
Magnet size: Φ60×Φ24×9mm (3.77oz)



M7703 50 W RMS. 150 W MAX.

3 inch Mid range
3 inch black mica pp cone with rubber edge
0.8 inch (20.4mm) ASV voice coil
Sensitivity: 87 dB/w/m
Impedance: 5Ω
Neodymium magnet size: Φ49.5×Φ15×4.0t N42H (1.8 oz)



M7702 30 W RMS. 120 W MAX.

3 inch Mid range
3 inch black mica pp cone with rubber edge
0.8 inch (20.4mm) ASV voice coil
Sensitivity: 87 dB/w/m
Impedance: 5Ω
Neodymium magnet size: Φ55×Φ24×10t



M100 50 W RMS. 150 W MAX.

Φ78mm Cloth dome Midrange
2inch (51.8mm) BASV voice coil
Frequency response: 800~8000Hz
Sensitivity: 86dB/w/m
Impedance: 4Ω
Magnet size: Φ50×16mm (5.54oz)



M7001 25 W RMS. 100 W MAX.

2.75 inch Mid range
2.75 inch black Paper cone
Cloth surround edge
0.8 inch (20.4mm) ASV voice coil
Sensitivity: 85dB/w/m
Impedance: 6Ω
Neodymium magnet Φ18.5×6.0t N42H

TWEETER



TW25-11 90 W MAX.

- Frequency: 2kHz~20kHz
- Impedance: 4Ω
- Sensitivity: 108dB
- Rms Power: 30W
- Voice Coil: 25.4mm KSV
- Diaphragm Material: Titanium
- Magnet: Neodymium



TW25-01G 90 W MAX.

- Frequency: 2kHz~20kHz
- Impedance: 4Ω
- Sensitivity: 108dB
- Rms Power: 30W
- Voice Coil: 25.4mm KSV
- Diaphragm Material: Titanium
- Magnet: Neodymium



TW25-02 90 W MAX.

- Frequency: 2kHz~20kHz
- Impedance: 4Ω
- Sensitivity: 108dB
- Rms Power: 30W
- Voice Coil: 25.4mm KSV
- Diaphragm Material: Titanium
- Magnet: Neodymium



TW25-04 90 W MAX.

- Frequency: 2kHz~20kHz
- Impedance: 4Ω
- Sensitivity: 105dB
- Rms Power: 30W
- Voice Coil: 25.4mm KSV
- Diaphragm Material: Titanium
- Magnet: 5.4 OZ



TW25-17 90 W MAX.

- Frequency: 2kHz~20kHz
- Impedance: 4Ω
- Sensitivity: 105dB
- Rms Power: 30W
- Voice Coil: 25.4mm KSV
- Diaphragm Material: Titanium
- Magnet: 5.4 OZ



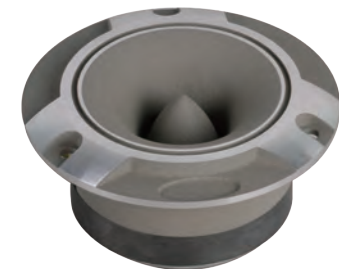
TW25-03G 90 W MAX.

- Frequency: 2kHz~20kHz
- Impedance: 4Ω
- Sensitivity: 105dB
- Rms Power: 30W
- Voice Coil: 25.4mm KSV
- Diaphragm Material: Titanium
- Magnet: 5.4 OZ



HA2501 90 W MAX.

- Frequency: 2kHz~20kHz
- Impedance: 4Ω
- Sensitivity: 105dB
- Rms Power: 30W
- Voice Coil: 25.4mm KSV
- Diaphragm Material: Resin film
- Magnet: 5.4 OZ



HA2502 90 W MAX.

- Frequency: 2kHz~20kHz
- Impedance: 4Ω
- Sensitivity: 105dB
- Rms Power: 30W
- Voice Coil: 25.4mm KSV
- Diaphragm Material: Resin film
- Magnet: 5.4 OZ



TW30-05

120 W MAX.

- Frequency: 2kHz~20kHz
- Impedance: 4Ω
- Sensitivity: 106dB
- Rms Power: 40W
- Voice Coil: 44.4mm KSV
- Diaphragm Material: Titanium
- Magnet: 11.5 OZ



TW44-01

120 W MAX.

- Frequency: 2kHz~20kHz
- Impedance: 4Ω
- Sensitivity: 106dB
- Rms Power: 40W
- Voice Coil: 44.4mm KSV
- Diaphragm Material: Titanium
- Magnet: 11.5 OZ



TW44-05

120 W MAX.

- Frequency: 2kHz~20kHz
- Impedance: 4Ω
- Sensitivity: 106dB
- Rms Power: 40W
- Voice Coil: 44.4mm KSV
- Diaphragm Material: Titanium
- Magnet: 11.5 OZ



TW25-45

90 W MAX.

- Frequency: 2kHz~20kHz
- Impedance: 4Ω
- Sensitivity: 105dB
- Rms Power: 30W
- Voice Coil: 44.4mm KSV
- Diaphragm Material: Titanium
- Magnet: 11.5 OZ



TW25-16

90 W MAX.

- Frequency: 2kHz~20kHz
- Impedance: 4Ω
- Sensitivity: 105dB
- Rms Power: 30W
- Voice Coil: 25mm KSV
- Diaphragm Material: Titanium
- Magnet: 5.4 OZ



TW25-29A

120 W MAX.

- Frequency: 2kHz~20kHz
- Impedance: 4Ω
- Sensitivity: 105dB
- Rms Power: 40W
- Voice Coil: 25mm KSV
- Diaphragm Material: Titanium
- Magnet: 5.4 OZ



TW25-37

120 W MAX.

- Frequency: 2kHz~20kHz
- Impedance: 4Ω
- Sensitivity: 106dB
- Rms Power: 40W
- Voice Coil: 25mm KSV
- Diaphragm Material: Titanium
- Magnet: 5.4 OZ



TW25-46

90 W MAX.

- Frequency: 2kHz~20kHz
- Impedance: 4Ω
- Sensitivity: 105dB
- Rms Power: 30W
- Voice Coil: 25mm KSV
- Diaphragm Material: Titanium
- Magnet: 5.4 OZ

TWEETER



TR9228



TR0125



TR9125



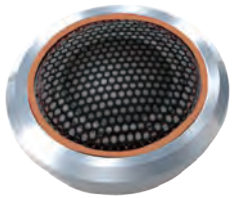
TR8425



TR9228B



TR9225



TR8025



TR6000C



TR6000



TR6000B



TR4225D



TR4225A



TR4225



ZT126



TR0025



TR7125



TR4000



S201



S20



TR5125



T25F



T25G



T320



T25E



TR4220C



TR5120



T20F



TR1113



T13E



T13G



T13M



T13B



T13G



T13H



T13I



T13J



T13K

CROSSOVER



C220



C209A



C209



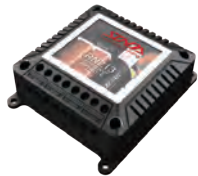
C213G



C211



C302



C213A



RN80



RN53



RN52



RN51



RN50



PF282



RN22



RN21



RN20



RN13



RN12



RN10



C226



PF250



PF260



C203



C204



PF280



C222



PF285



PF286



PF287



SD Series

Specifications:

Model Number	SD2500DL	SD3000DL
W x H x L:	305 x 68 x 650 mm	305 x 68 x 650 mm
RMS, 1 Ω	2500W	3000W
RMS, 2 Ω	1700w	2000W
RMS, 4 Ω	900w	1000W

FEATURES:

- Variable bass boost: 0-18dB at 45Hz
- Balanced low input
- Variable subsonic filter: 15-40Hz, 24dB/OCT
- Variable low pass filter: 15-150Hz, 24dB/OCT
- Phase control switch: 0o/180o
- Over voltage protection, Linkable, Remote Level control

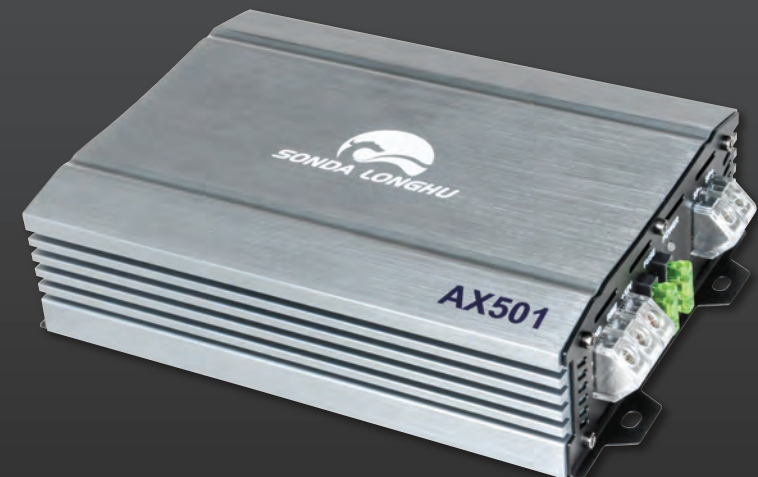
AX Series

Specifications:

Model Number	AX501
W x H x L:	200 x 150 x 56 mm
RMS, 4 Ω	350W
RMS, 2 Ω	500W

AX501

- LPF- Crossover:20-200Hz
- S/N:80dB
- DC offset:<30mv
- Input Sensitivity(LOW):200mv---2v
- Bass Boost:0---8dB
- Speaker short/Thermal/Low /High Voltage-pro:Yes



AMPLIFIER



- Features:
HPF: 80Hz - 500Hz /
LPF: 50Hz - 250Hz /
Bass Boost: 0 - 6dB - 12dB

BX6 Series

AB Class

Model Number	BX664	BX864	BX1064	BX862	BX1562
W x H x L:	346 x 160 x 53 mm	386 x 160 x 53 mm	466 x 160 x 53 mm	286 x 160 x 53 mm	386 x 160 x 53 mm
RMS. 4 Ω	60W x 4CH	75W x 4CH	100W x 4CH	80W x 2CH	150W x 2CH
RMS. 2 Ω	90W x 4CH	120W x 4CH	150W x 4CH	120W x 2CH	225W x 2CH
4 Ω Bridged	150W x 2CH	200W x 2CH	150W x 2CH	200W x 2CH	375W x 1CH

D Class

Model Number	BX864D	BX661D	BX1261D
W x H x L:	346 x 160 x 53 mm	346 x 160 x 53 mm	466 x 160 x 53 mm
RMS. 4 Ω	75W x 4CH	200W	400W
RMS. 2 Ω	120W x 4CH	400W	800W
RMS. 1 Ω	/	600W	1200W
4 Ω Bridged	200W x 2CH		

- Features:
Variable Subsonic Filter : 15 - 30Hz, 24dB/OCT
Variable Low Pass Filter: 15 - 150Hz, 24dB/OCT
Phase Control Switch: 0°/180°
Bass Boost At 45Hz: 0 - 18dB
Remote Level Control

GX8A Series

AB Class

Model Number	GX684A	GX884A	GX1084A	GX1584A	GX882A	GX1582A	GX2082A
W x H x L:	250 x 52 x 312 mm	250 x 52 x 352 mm	250 x 52 x 452 mm	250 x 52 x 520 mm	250 x 52 x 262 mm	250 x 52 x 382 mm	250 x 52 x 452 mm
RMS. 4 Ω	60W x 4CH	80W x 4CH	100W x 4CH	150W x 4CH	80W x 2CH	150W x 2CH	200W x 2CH
RMS. 2 Ω	90W x 4CH	120W x 4CH	150W x 4CH	200W x 4CH	120W x 2CH	200W x 2CH	300W x 2CH
4 Ω Bridged	150W x 2CH	200W x 2CH	260W x 2CH	350W x 2CH	200W x 1CH	350W x 1CH	500W x 1CH

AB Class

Model Number	GX1581A	GX3081A	GX5081A
W x H x L:	250 x 52 x 262 mm	250 x 52 x 382 mm	250 x 52 x 432 mm
RMS. 4 Ω	150W x 1CH	300W x 1CH	500W x 1CH
RMS. 2 Ω	200W x 1CH	500W x 1CH	800W x 1CH

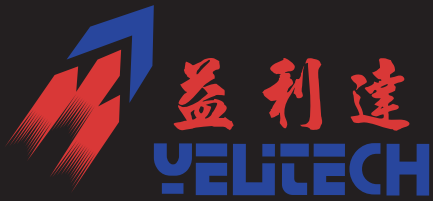
- AB Class Features:
HPF: 50Hz - 250Hz / LPF: 50Hz - 250Hz / Bass Boost: 0 - 12dB

D Class

Model Number	GX681A	GX1281A	GX1781A
W x H x L:	250 x 52 x 322 mm	250 x 52 x 352 mm	250 x 52 x 432 mm
RMS. 4 Ω	200W	400W	600W
RMS. 2 Ω	400W	800W	1200W
RMS. 1 Ω	600W	1200W	1700W

- D Class Features:
Variable Subsonic Filter : 15 - 30Hz, 24dB/OCT
Variable Low Pass Filter: 15 - 150Hz, 24dB/OCT
Phase Control Switch: 0°/180°
Bass Boost At 45Hz: 0 - 18dB
Remote Level Control





路线1: — —

Shenzhen / HK checkpoint to Yelitech factory - 1.5 Hour
 深圳(Shenzhen) - 上广深高速(expressway), 到虎门(Humen) 高速, 进入东莞高速, 转广州绕城高速到顺德杏坛(Xingtan) 出口百安公路下高速 - 经均安转入江门荷塘工厂 (Yelitech Factory)

路线2: —

Zhuhai / Macau to Yelitech factory - 1 Hour
 珠海 / 澳门(Zhuhai / Macau) - 经珠海大道东, 到珠海西收费站(Zhuhai West toll station), 上中江高速(expressway), 在海外收费站(Waihai, Jiangmen toll station)下高速, 转入江门荷塘工厂 (Yelitech Factory)

路线3: —

Canton fair site to Yelitech factory - 1 Hour
 广交会琶洲会场(Canton fair site) - 沿新港东路由西方向, 到新港东立交, 上华南快速干线(Expressway), 到土华收费站(Tuhua toll station), 转环城高速公路(Expressway), 至增滘立交桥(Zengjiao toll station), 经龙溪大道至桂城立交(Guicheng), 上佛山一环(Foshan expressway), 至顺德杏坛(Xingtan, Shunde)百安公路下高速, 经均安转入江门荷塘工厂 (Yelitech Factory)

路线4: —

HK airport / TsimShaTsui port to Yelitech factory - 2 Hours
 香港机场海天码头(Haitian seaport in HK airport) / 尖沙咀码头(Tsim Sha Tsui port), 渡船过中山港(Ferry to Zhongshan port), 沿中江高速(Expressway), 到中山古镇(Guzhen, Zhongshan)横栏收费站(Henglan toll station)下高速, 转入江门荷塘工厂 (Yelitech Factory)

粤港澳大湾区 Greater Bay Area Series

Yelitech Car Audio Co., Ltd.

HK Office:
 Rm. 1904, 19/F, Boss Commercial Centre,
 No.28 Ferry Street, Yau Ma Tei, Kowloon, Hong Kong
 Tel: +852-27528818 Fax: +852-27528005

Factory:
 Tangxi Industrial Zone, Hetang Town,
 Pengjiang District, Jiangmen,
 Guangdong, China.
 Tel: +86-750-3953595 Fax: +86-750-3953500

Website: www.yelitech.com